



# PHD

## Pipe Hangers & Devices Strut Products & Accessories

Pictorial Brochure

**PHD Manufacturing, Inc.**

44018 Columbiana-Waterford Road  
Columbiana, Ohio 44408

Phone: (800) 321-2736 • (330) 482-9256  
Fax: (330) 482-2763 • [www.phd-mfg.com](http://www.phd-mfg.com)



**P**ride

**H**onesty

**D**edication



**PHD Manufacturing, Inc.**

44018 Columbiana-Waterford Road  
Columbiana, Ohio 44408

Phone: (800) 321-2736 ▪ (330) 482-9256  
Fax: (330) 482-2763 ▪ [www.phd-mfg.com](http://www.phd-mfg.com)

**YOUR LOCAL PHD REPRESENTATIVE IS:**

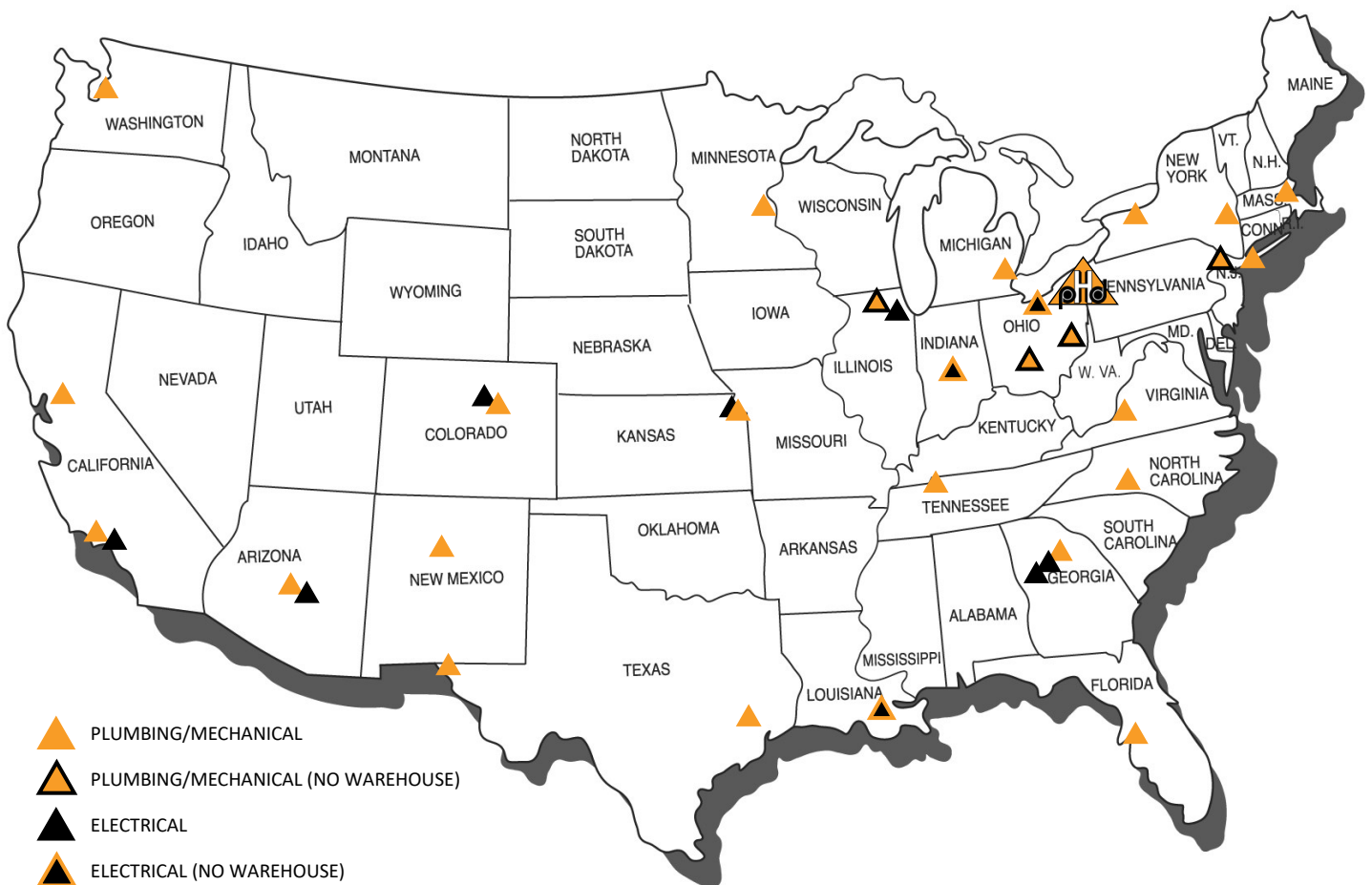
# INTRODUCTION



PHD Manufacturing, Inc. was founded in 1972 by a group of industry veterans with strong management, financial, sales and manufacturing backgrounds. The entrepreneurial vision of this close group used the talents they acquired over the years to forge something special in a business that needed a different purpose. This core group continues to manage PHD Manufacturing, Inc. today, ensuring the original commitment to quality and excellence.

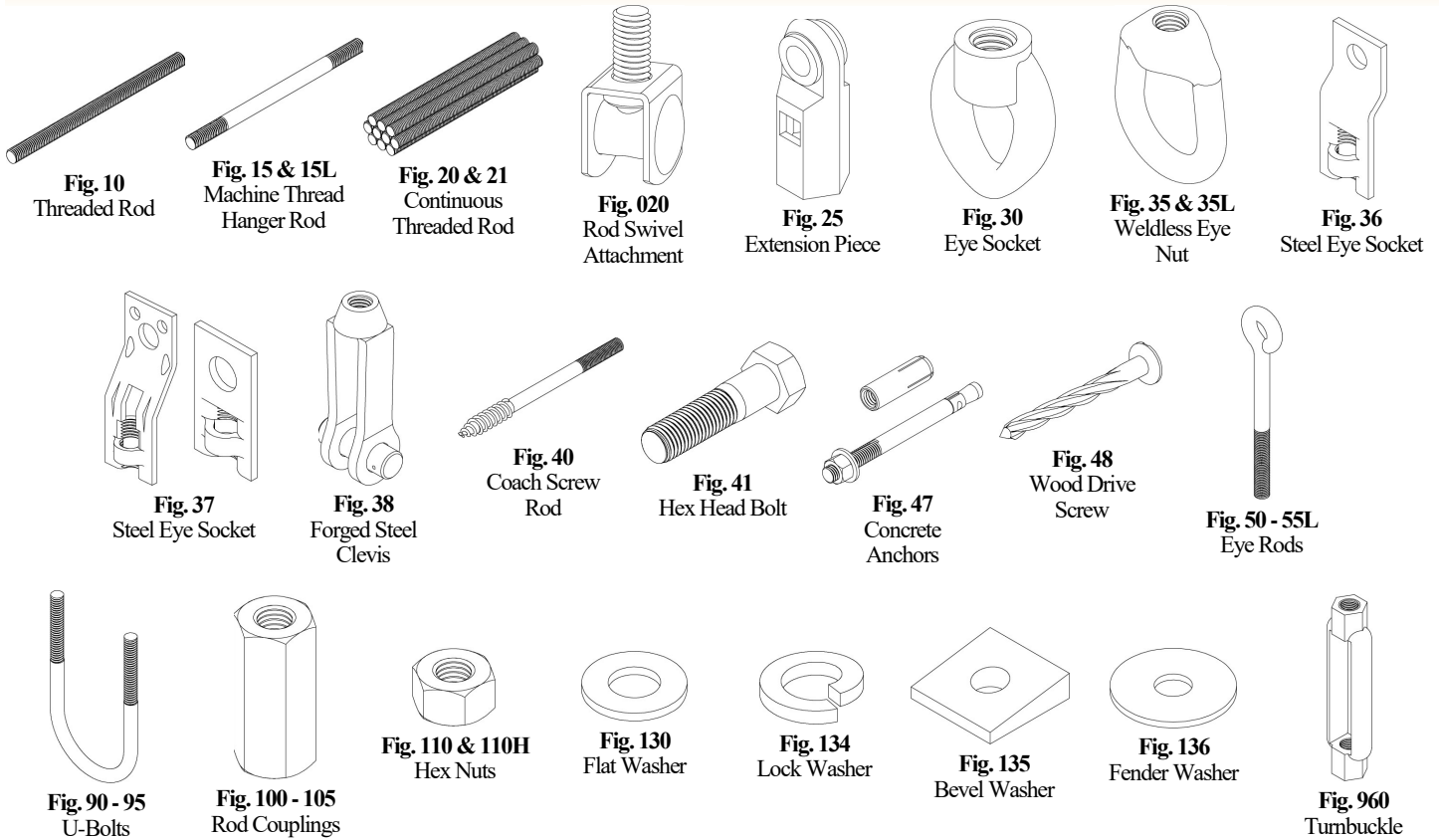
Our 30 professional sales representatives supporting the plumbing, mechanical and electrical industries are ready to serve your needs. Our manufacturing plant in Columbiana, Ohio, together with our 24 stocking warehouses throughout the United States, gives us one of the largest inventories in the industry.

Many of our products are Underwriter's Laboratories listed and Factory Mutual Approved. All PHD Manufacturing, Inc. products are manufactured to meet or exceed industry standards set for their design and manufacture. If you need a product not listed in this catalog, please call the factory or your local PHD Manufacturing, Inc. representative to check availability and pricing.

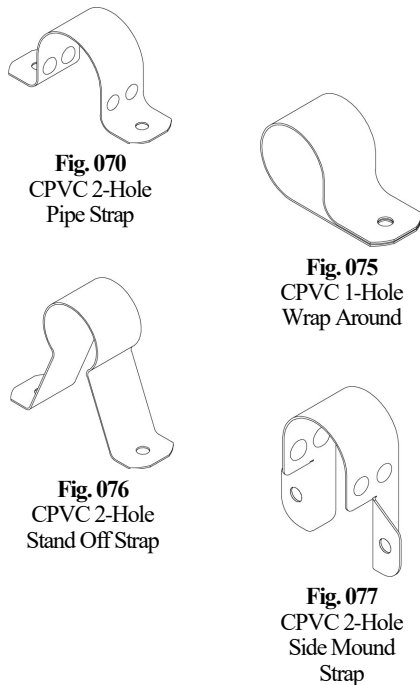


# PIPE HANGERS & DEVICES

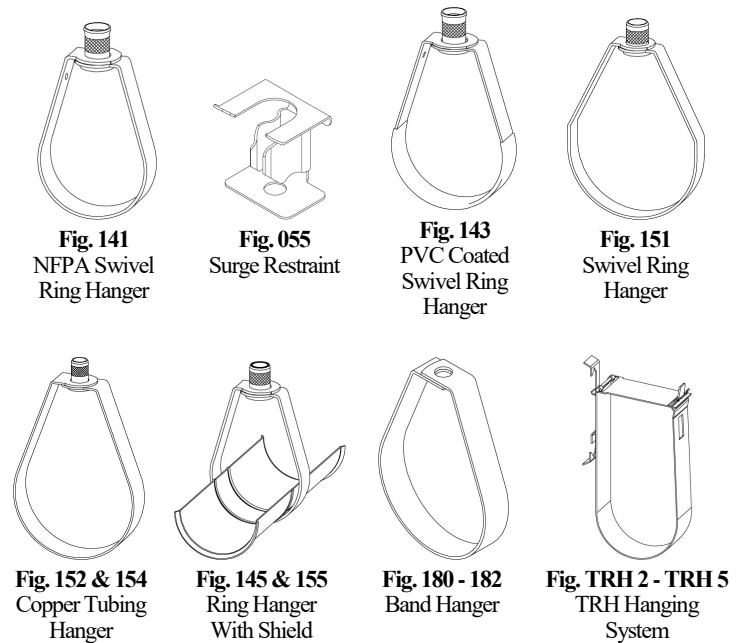
## THREADED ACCESSORIES



## CPVC STRAPS



## BAND HANGERS

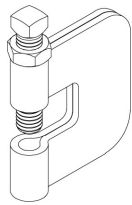




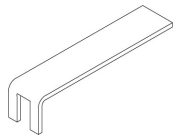
# PIPE HANGERS & DEVICES



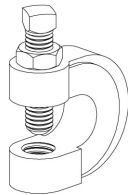
## BEAM CLAMPS



**Fig. 250**  
Steel C-Clamp



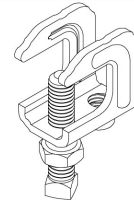
**Fig. 259**  
C-Clamp  
Retaining Strap



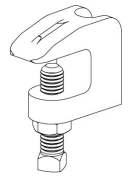
**Fig. 270**  
Malleable Iron  
C-Clamp



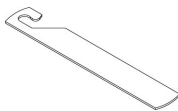
**Fig. 290**  
Purlin Clamp



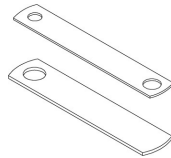
**Fig. 345**  
Stamped Steel  
Top Beam  
Clamp



**Fig. 350**  
Import Beam  
Clamp



**Fig. 358**  
Retrofit Retaining  
Strap



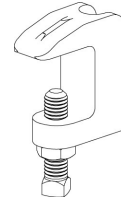
**Fig. 359**  
Beam Clamp  
Retaining Strap



**Fig. 360**  
Import Wide  
Mouth Beam  
Clamp

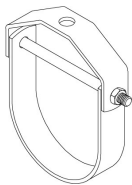


**Fig. 350 - 357**  
Domestic Beam  
Clamp

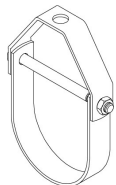


**Fig. 363 & 364**  
Domestic Wide  
Mouth Beam  
Clamp

## CLEVIS HANGERS



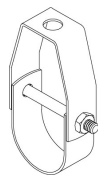
**Fig. 420**  
A.W.W.A. Clevis



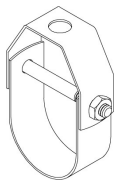
**Fig. 425 & 426**  
Stainless Steel  
Clevis



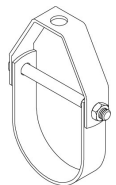
**Fig. 430**  
Insulated Pipe  
Clevis



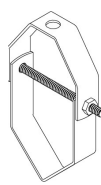
**Fig. 440 - 441**  
Light Duty Clevis



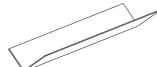
**Fig. 442**  
Copper Tubing  
Clevis



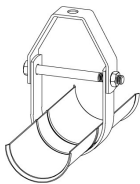
**Fig. 450 - 454**  
Standard Clevis



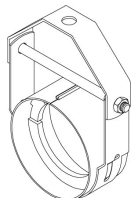
**Fig. 450V**  
V-Bottom Clevis



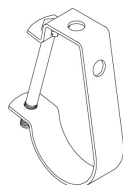
**Fig. 450T**  
V-Bottom Clevis  
Support Trough



**Fig. 455 - 456**  
Clevis With  
Secured Shield

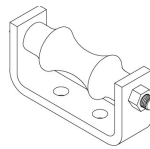


**Fig. 703025 - 308362**  
Clevis Series  
Klo-Shure Hanger

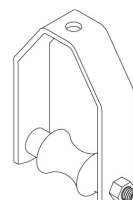


**Fig. 970 - 973**  
J-Hanger

## PIPE ROLLER SUPPORTS



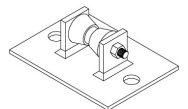
**Fig. 460**  
Pipe Roller  
Chair



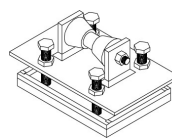
**Fig. 470 & 475**  
Pipe Roller  
Hanger



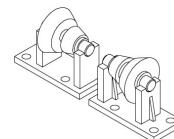
**Fig. 480 & 480D**  
Adjustable Pipe  
Roller Support



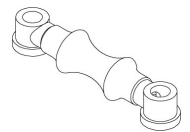
**Fig. 486**  
Pipe Roller  
Stand



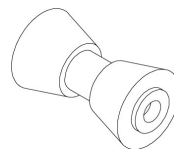
**Fig. 487**  
Adjustable Pipe  
Roller Stand  
With Base



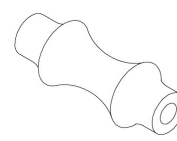
**Fig. 488**  
Fabricated Roller  
For Large Piping



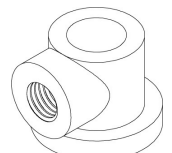
**Fig. 490**  
Pipe Roller With  
Sockets



**Fig. 485**  
Short Pipe Roller



**Fig. 495**  
Long Pipe Roller



**Fig. 496**  
Roller Socket

# PIPE HANGERS & DEVICES

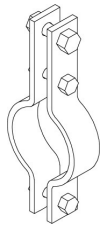
## PIPE CLAMPS



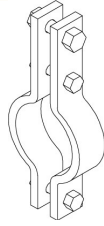
**Fig. 520 & 521**  
Standard Pipe Clamp



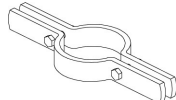
**Fig. 522**  
Heavy Duty Pipe Clamp



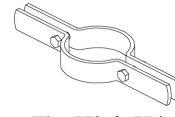
**Fig. 525**  
Double Bolt Pipe Clamp



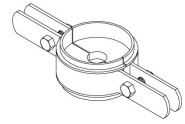
**Fig. 526**  
Heavy Duty Double Bolt Pipe Clamp



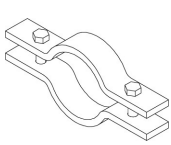
**Fig. 550, 551 & 553**  
Riser Clamp



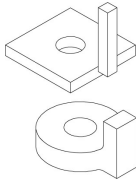
**Fig. 552 & 554**  
Copper Tubing Riser Clamp



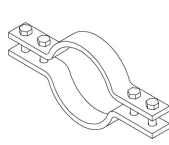
**Fig. R087100 - R412150**  
Insulation Riser Clamp



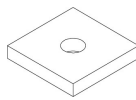
**Fig. 580**  
2-Bolt Underground Pipe Clamp



**Fig. 585**  
Washer For Fig. 580



**Fig. 590**  
4-Bolt Underground Pipe Clamp



**Fig. 595**  
Washer For Fig. 590



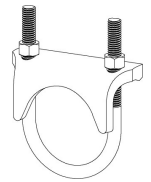
**Fig. 825 & 826**  
Two Hole Pipe Strap



**Fig. 830**  
Short Pipe Strap



**Fig. 835 - 837**  
One Hole Pipe Strap

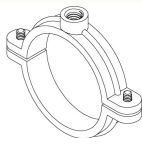


**Fig. 840**  
Right Angle Pipe Clamp

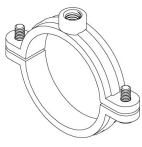
## SPLIT RING HANGERS



**Fig. 508R**  
Hinged Extension Split Clamp



**Fig. 510R**  
Extension Split Clamp

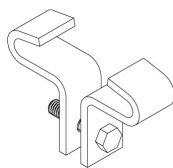


**Fig. 512**  
Copper Tubing Extension Split Clamp

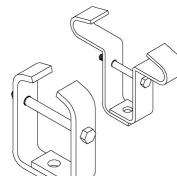


**Fig. 512H**  
Hinged Copper Tubing Extension Split Clamp

## CENTER LOAD BEAM CLAMPS



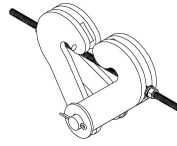
**Fig. 610 & 620**  
Steel Center Load Beam Clamp



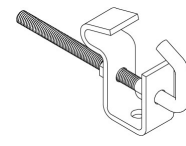
**Fig. 625**  
Steel Center Load Beam Clamp



**Fig. 630**  
Malleable Center Load Beam Clamp

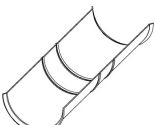


**Fig. 632 - 633**  
Steel Center Load Beam Clamp



**Fig. 635**  
Adjustable Steel Beam Clamp

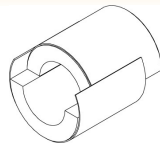
## SHIELDS, INSULATION, & PIPE SADDLES



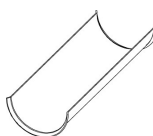
**Fig. 160**  
Self Centering Insulation Shield



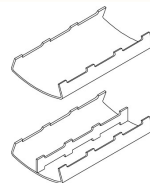
**Fig. 165 - 166**  
Self Locking Pipe & Tube Insulation



**Fig. 167 - 168**  
Non Locking Pipe & Tube Insulation

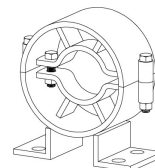


**Fig. 170**  
Insulation Shield

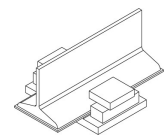


**Fig. 651 - 658**  
Pipe Saddle

## PIPE GUIDES & SLIDES



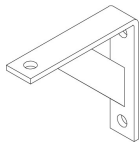
**Fig. 670 - 678**  
Pipe Alignment Guide



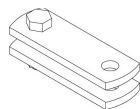
**Fig. 690**  
Pipe Slide

# PIPE HANGERS & DEVICES

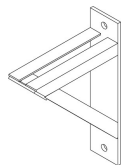
## WALL BRACKETS



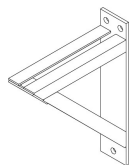
**Fig. 850**  
Light Duty  
Wall Bracket



**Fig. 850C**  
Clip For  
Fig. 850  
Wall Bracket

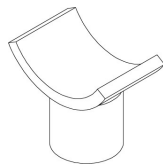


**Fig. 855**  
Medium Duty  
Wall Bracket

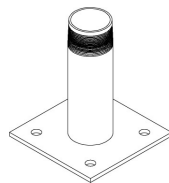


**Fig. 860**  
Heavy Duty  
Wall Bracket

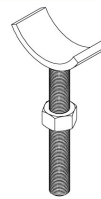
## PIPE SUPPORTS



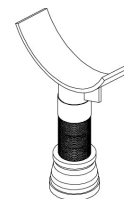
**Fig. 870**  
Pipe Saddle  
Support With  
Coupling



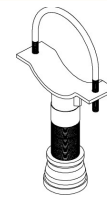
**Fig. 871**  
Threaded Base  
Stand



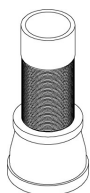
**Fig. 874**  
Pipe Saddle  
Support With  
Stud



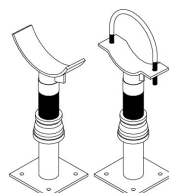
**Fig. 875**  
Adjustable Pipe  
Saddle Support



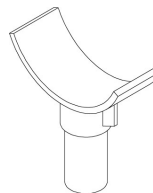
**Fig. 876**  
Adjustable Pipe  
Saddle Support  
With U-Bolt



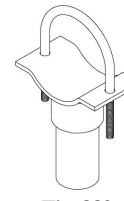
**Fig. 877**  
Pipe Support  
Adjuster



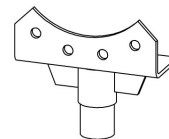
**Fig. 878 & 879**  
Pipe Support  
Adjuster



**Fig. 880**  
Pipe Saddle  
Support



**Fig. 882**  
Pipe Saddle  
Support With  
U-Bolt

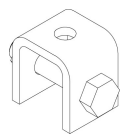


**Fig. 883**  
Pipe Flange  
Support

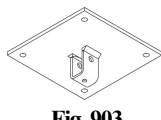
## STRUCTURAL ATTACHMENTS



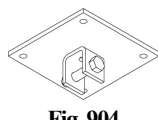
**Fig. 885**  
Adjustable  
Q-Deck Insert



**Fig. 900 & 900-1**  
Welded Beam  
Attachment



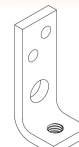
**Fig. 903**  
Concrete Rod  
Attachment Plate



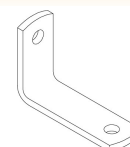
**Fig. 904**  
Concrete Clevis  
Plate



**Fig. 905**  
Side Beam  
Connector



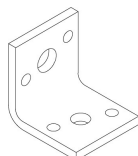
**Fig. 906**  
Steel Side Beam  
Connector



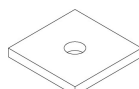
**Fig. 910**  
Reversible Angle  
Bracket



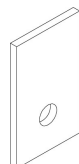
**Fig. 920**  
Side Beam Angle  
Bracket



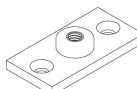
**Fig. 925**  
Reversible Side  
Beam Angle  
Bracket



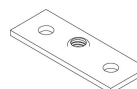
**Fig. 930**  
Square Plate  
Washer



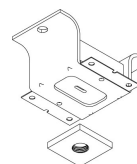
**Fig. 935 & 936**  
Welding Lug



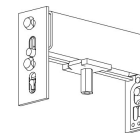
**Fig. 940 - 942**  
Ceiling Flange



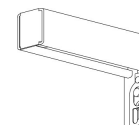
**Fig. 945 & 946**  
Steel Ceiling  
Plate



**Fig. 950 - 951N**  
Concrete Insert

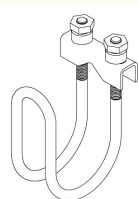


**Fig. 990**  
Adjustable In  
Rack Flue  
Hanger



**Fig. 995**  
Single In Rack  
Flue Hanger

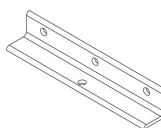
## SEISMIC



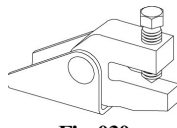
**Fig. 010**  
Sway Brace Pipe  
Attachment



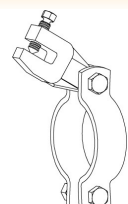
**Fig. 015**  
Large Sway  
Brace Pipe  
Attachment



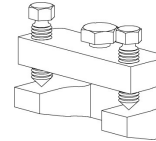
**Fig. 025**  
Multi-Fastener  
Adapter



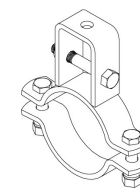
**Fig. 030**  
C-Clamp  
Structural  
Attachment



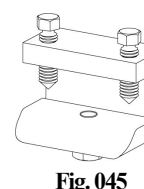
**Fig. 031**  
Clamping Pipe  
Attachment



**Fig. 035**  
Sway Brace Bar  
Joist Adapter



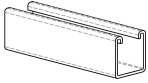
**Fig. 040**  
Supporting Pipe  
Attachment



**Fig. 045**  
Sway Brace  
Structural  
Adapter

# STRUT PRODUCTS & ACCESSORIES

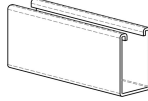
## CHANNEL STRUT



**Fig. 1001 - 1042**  
1 5/8" x 1 5/8"  
12 Ga. Channel



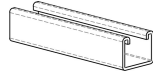
**Fig. 1101 - 1142**  
1 5/8" x 1 5/8"  
14 Ga. Channel



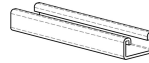
**Fig. 1601 - 1642**  
1 5/8" x 2 7/16"  
12 Ga. Channel



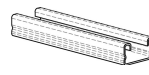
**Fig. 1201 - 1242**  
1 5/8" x 1 3/16"  
12 Ga. Channel



**Fig. 1701 - 1742**  
1 5/8" x 1 3/8"  
12 Ga. Channel



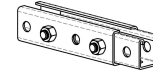
**Fig. 1301 - 1342**  
1 5/8" x 1 3/16"  
14 Ga. Channel



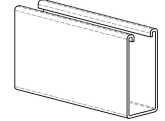
**Fig. 1801 - 1842**  
1 5/8" x 1 3/16"  
16 Ga. Channel



**Fig. 1401 - 1442**  
1 5/8" x 1"  
12 Ga. Channel

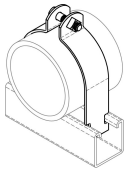


**Fig. 1950 - 1960**  
Telescoping  
12 Ga. Channel

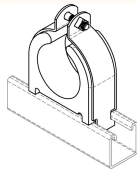


**Fig. 1501 - 1542**  
1 5/8" x 3 1/4"  
12 Ga. Channel

## PIPE & CONDUIT SUPPORTS



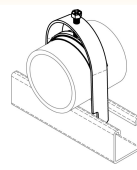
**Fig. 2001 - 2016**  
I.P. Pipe Clamp



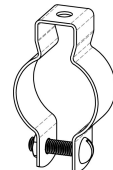
**Fig. 2501 - 2588**  
Clamp With  
Cushion



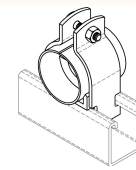
**Fig. 2600**  
Cushion Material



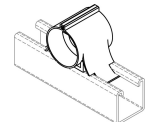
**Fig. 2701 - 2712**  
1-Piece  
EMT/GRC Strap



**Fig. 2801 - 2809**  
Conduit Hanger

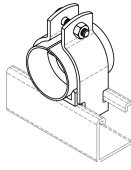


**Fig. 723025 - 729312**  
7 Series Klo-Shure  
Clamp For Elastomeric  
Insulation

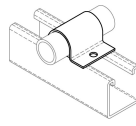


**Fig. 824050 - 828262**  
8 Series Klo-Shure  
Clamp For Elastomeric  
Insulation

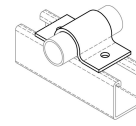
**Fig. 2101 - 2107**  
Universal Pipe  
Clamp For  
EMT, IMC, & GRC



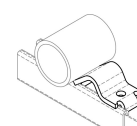
**Fig. 922060 - 929190**  
9 Series Klo-Shure  
Clamp For Fiberglass  
Insulation



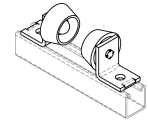
**Fig. 7231 - 7238**  
1-Hole O.D.  
Tube Clamp



**Fig. 7251 - 7265**  
Standard Pipe  
Straps



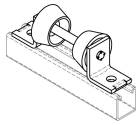
**Fig. 7370**  
Pipe Stop



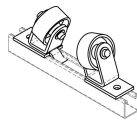
**Fig. 7400**  
Separate  
Rollers

**Fig. 2201 - 2207**  
EMT Conduit Clamps

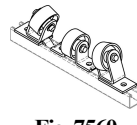
**Fig. 2301 - 2314**  
Copper Tubing Clamp



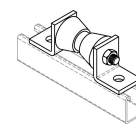
**Fig. 7501 - 7506**  
Pipe Roller  
With Axle



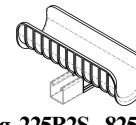
**Fig. 7530**  
60° Separate  
Rollers



**Fig. 7560**  
60° Separate  
Rollers With  
Center Roller

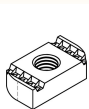


**Fig. 7581 - 7585**  
Roller Support

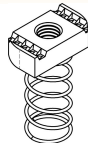


**Fig. 225B2S - 825W2S**  
Bronco Saddle for Insulated  
Tube & Pipe

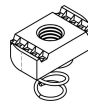
## STRUT NUTS & HARDWARE



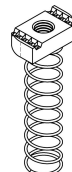
**Fig. 3001 - 3011**  
Strut Nut Without  
Spring



**Fig. 3101 - 3111**  
Strut Nut With  
Spring



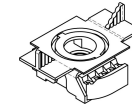
**Fig. 3201 - 3210**  
Strut Nut With  
Short Spring



**Fig. 3301 - 3311**  
Strut Nut With  
Long Spring



**Fig. 3351 - 3353**  
Shallow Strut Nut  
Without Spring



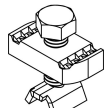
**Fig. 3404 - 3408**  
Squeeze Nut



**Fig. 3504 - 3508**  
Combo Nut  
Washer



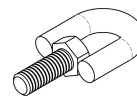
**Fig. 7600**  
Cradle Clip



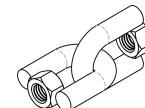
**Fig. 7605**  
Rod Stiffener



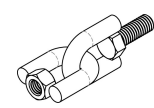
**Fig. 7610 & 7611**  
Female Swivel



**Fig. 7615 & 7616**  
Male Swivel



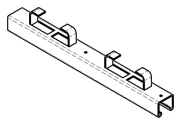
**Fig. 7620 & 7621**  
Female/Female  
Swivel



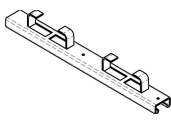
**Fig. 7625 & 7626**  
Female/Male  
Swivel



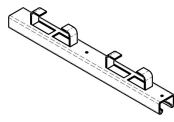
## CONCRETE INSERT



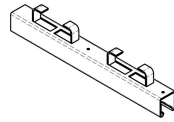
**Fig. 4001 - 4002**  
1<sup>5</sup>/<sub>8</sub>" x 1<sup>3</sup>/<sub>8</sub>"  
12 Ga.  
Continuous  
Concrete Insert



**Fig. 4101 - 4102**  
1<sup>5</sup>/<sub>8</sub>" x 1<sup>3</sup>/<sub>16</sub>"  
12 Ga.  
Continuous  
Concrete Insert

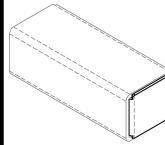


**Fig. 4201 - 4202**  
1<sup>5</sup>/<sub>8</sub>" x 1"  
12 Ga.  
Continuous  
Concrete Insert

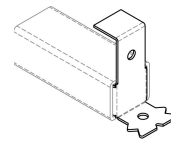


**Fig. 4301 - 4302**  
1<sup>5</sup>/<sub>8</sub>" x 1<sup>5</sup>/<sub>8</sub>"  
12 Ga.  
Continuous  
Concrete Insert

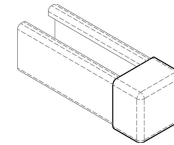
## END CAPS & CLOSURES



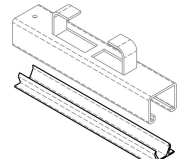
**Fig. 4405 - 4420**  
Type A End Cap



**Fig. 4440 - 4470**  
Type B End Cap

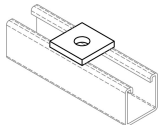


**Fig. 4475 - 4489**  
Safety End Cap

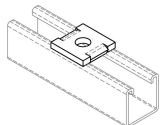


**Fig. 4500 - 4506**  
Closure Strip

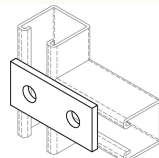
## FLAT PLATE FITTINGS



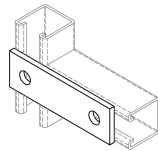
**Fig. 5000 - 5004**  
Square Washer



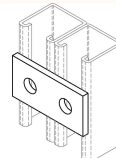
**Fig. 5005 - 5009**  
No Turn Square  
Washer



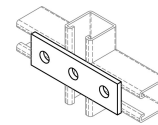
**Fig. 5010**  
2-Hole Splice  
Plate



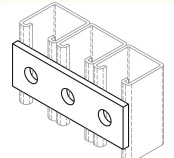
**Fig. 5011**  
2-Hole Splice  
Plate



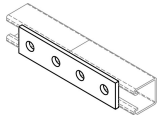
**Fig. 5012**  
2-Hole Splice  
Plate



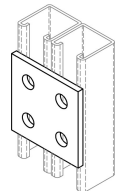
**Fig. 5013**  
3-Hole Splice  
Plate



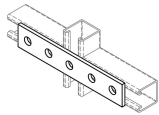
**Fig. 5014**  
3-Hole Splice  
Plate



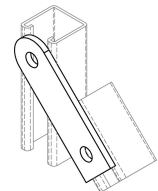
**Fig. 5015**  
4-Hole Splice  
Plate



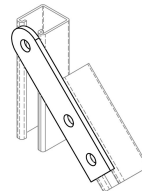
**Fig. 5017**  
4-Hole Splice  
Plate



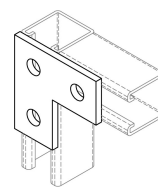
**Fig. 5019**  
5-Hole Splice  
Plate



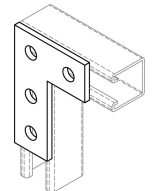
**Fig. 5020**  
2-Hole Swivel  
Plate



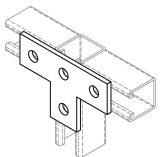
**Fig. 5023**  
3-Hole Swivel  
Plate



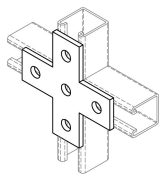
**Fig. 5025**  
3-Hole Corner  
Plate



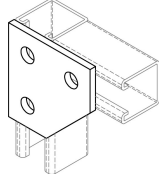
**Fig. 5030**  
4-Hole Corner  
Plate



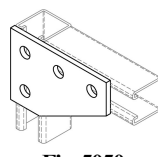
**Fig. 5035**  
4-Hole Tee Plate



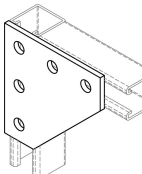
**Fig. 5040**  
5-Hole Cross  
Plate



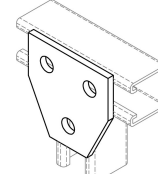
**Fig. 5045**  
3-Hole Corner  
Gusset Plate



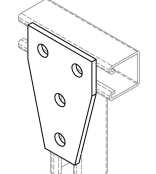
**Fig. 5050**  
4-Hole Corner  
Gusset Plate



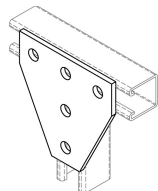
**Fig. 5060**  
5-Hole Corner  
Gusset Plate



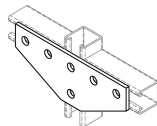
**Fig. 5065**  
3-Hole Tee  
Gusset Plate



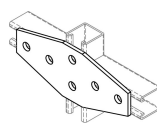
**Fig. 5075**  
4-Hole Tee  
Gusset Plate



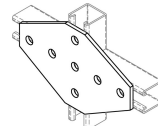
**Fig. 5080**  
5-Hole Tee  
Gusset Plate



**Fig. 5085**  
6-Hole Tee  
Gusset Plate

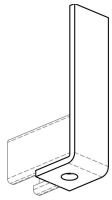


**Fig. 5090**  
6-Hole Cross  
Gusset Plate

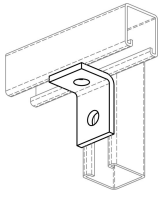


**Fig. 5095**  
7-Hole Cross  
Gusset Plate

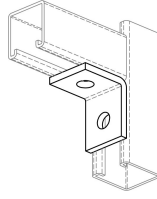
## 90° ANGLE FITTINGS



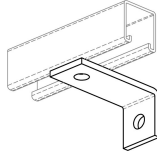
**Fig. 5101 - 5107**  
1-Hole Angle



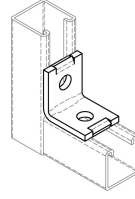
**Fig. 5110**  
2-Hole Corner Angle



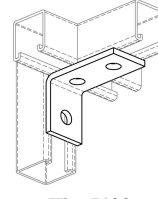
**Fig. 5112**  
2-Hole Corner Angle



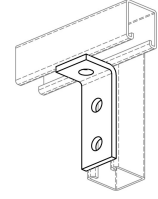
**Fig. 5115 - 5118**  
2-Hole Corner Angle



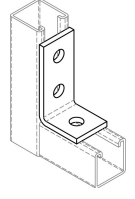
**Fig. 5119**  
No Turn 2-Hole Corner Angle



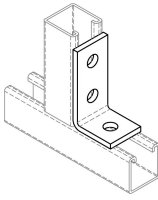
**Fig. 5120**  
3-Hole Corner Angle



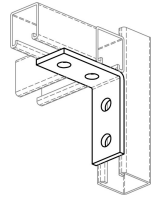
**Fig. 5121**  
3-Hole Corner Angle



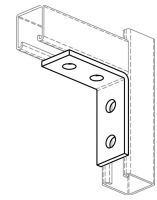
**Fig. 5122**  
3-Hole Corner Angle



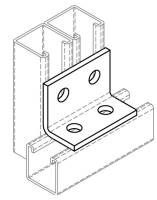
**Fig. 5123**  
3-Hole Corner Angle



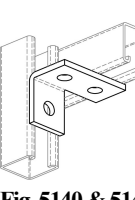
**Fig. 5130**  
4-Hole Corner Angle



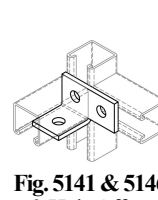
**Fig. 5131**  
4-Hole Corner Angle



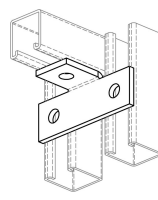
**Fig. 5135**  
4-Hole Corner Angle



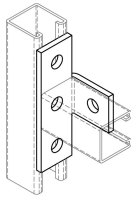
**Fig. 5140 & 5145**  
3-Hole Offset Bent Angle



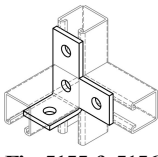
**Fig. 5141 & 5146**  
3-Hole Offset Bent Angle



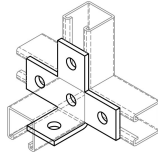
**Fig. 5148**  
3-Hole Offset Bent Tee



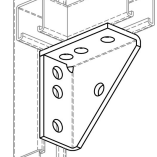
**Fig. 5150**  
4-Hole Offset Bent Tee



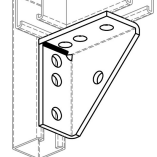
**Fig. 5155 & 5156**  
4-Hole Offset Bent Tee



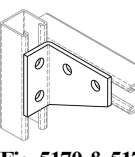
**Fig. 5160**  
5-Hole Offset Bent Tee



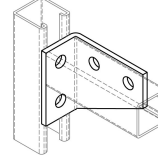
**Fig. 5165**  
Universal Shelf Bracket



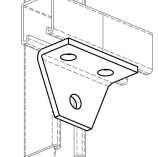
**Fig. 5166**  
Universal Welded Shelf Bracket



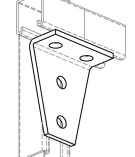
**Fig. 5170 & 5175**  
4-Hole Corner Gusset



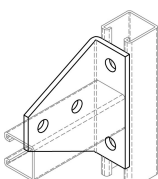
**Fig. 5171 & 5176**  
4-Hole Corner Gusset



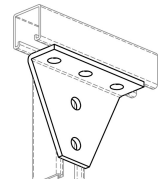
**Fig. 5180**  
3-Hole Gussetted Shelf Angle



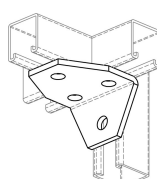
**Fig. 5185**  
4-Hole Gussetted Shelf Angle



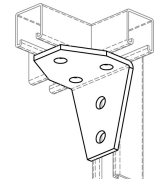
**Fig. 5186**  
4-Hole Gussetted Shelf Angle



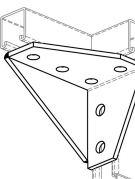
**Fig. 5190**  
5-Hole Gussetted Shelf Angle



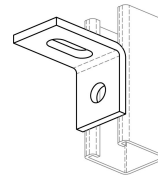
**Fig. 5200**  
4-Hole Joint Angle Connector



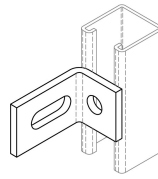
**Fig. 5205**  
5-Hole Joint Angle Connector



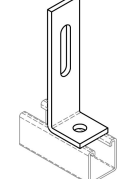
**Fig. 5210 & 5211**  
6-Hole Gussetted Corner Connector



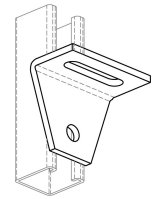
**Fig. 5220**  
2-Hole Adjustable Corner Angle



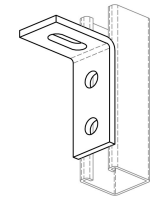
**Fig. 5221**  
2-Hole Adjustable Corner Angle



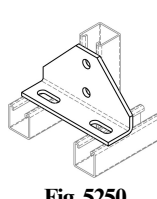
**Fig. 5225 & 5226**  
2-Hole Adjustable Corner Angle



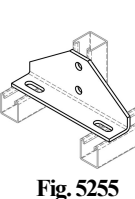
**Fig. 5228**  
2-Hole Adjustable Corner Angle



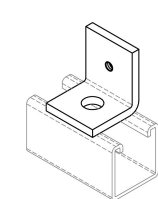
**Fig. 5230**  
3-Hole Adjustable Corner Angle



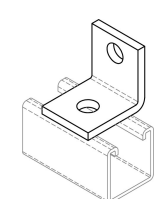
**Fig. 5250**  
4-Hole Adjustable Corner Angle



**Fig. 5255**  
4-Hole Adjustable Corner Angle

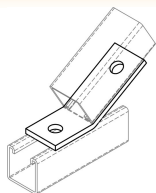


**Fig. 5260**  
2-Hole Tapped Corner Angle

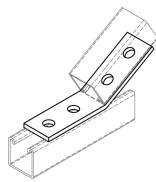


**Fig. 5270**  
2-Hole Bus Duct Angle

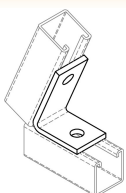
## ANGLE FITTINGS



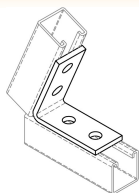
**Fig. 5301 - 5315**  
2-Hole Open  
Angle  
Connectors



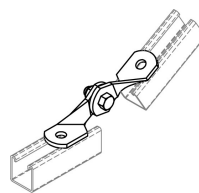
**Fig. 5340 - 5350**  
4-Hole Open  
Angle  
Connectors



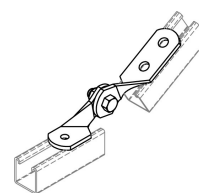
**Fig. 5360 - 5366**  
2-Hole Closed  
Angle  
Connectors



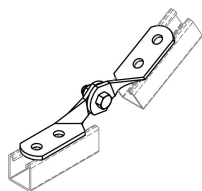
**Fig. 5370 - 5376**  
4-Hole Closed  
Angle  
Connectors



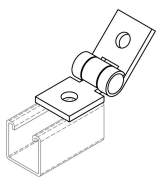
**Fig. 5380**  
2-Hole  
Adjustable Hinge



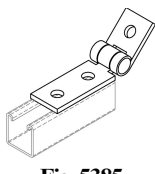
**Fig. 5381 & 5382**  
3-Hole  
Adjustable Hinge



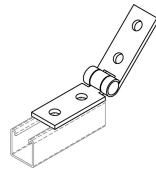
**Fig. 5383**  
4-Hole  
Adjustable Hinge



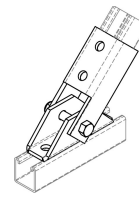
**Fig. 5384**  
2-Hole  
Adjustable Hinge



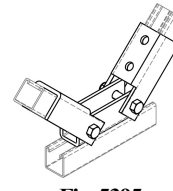
**Fig. 5385**  
3-Hole  
Adjustable Hinge



**Fig. 5386**  
4-Hole  
Adjustable Hinge

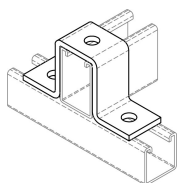


**Fig. 5390**  
Single Adjustable  
Brace For use  
with 1<sup>5</sup>/<sub>8</sub>" Strut

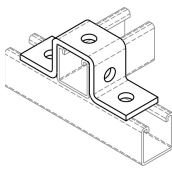


**Fig. 5395**  
Double Adjustable  
Brace For use with  
1<sup>5</sup>/<sub>8</sub>" Strut

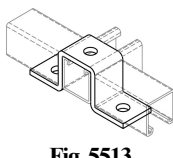
## "U" SHAPE FITTINGS



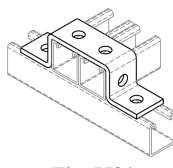
**Fig. 5501 - 5511**  
3-Hole "U"  
Support



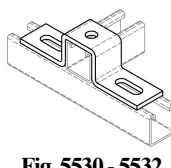
**Fig. 5503**  
5-Hole "U"  
Support



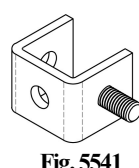
**Fig. 5513**  
3-Hole "U"  
Support



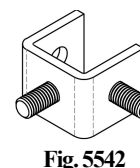
**Fig. 5521**  
6-Hole "U"  
Support



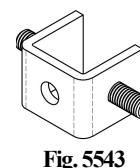
**Fig. 5530 - 5532**  
Slotted 3-Hole  
"U" Support



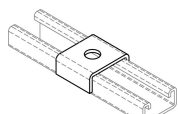
**Fig. 5541**  
1 Stud Ring  
Connector



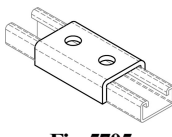
**Fig. 5542**  
2 Stud Ring  
Connector



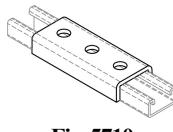
**Fig. 5543**  
2 Stud Ring  
Connector



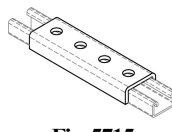
**Fig. 5700 - 5704**  
1-Hole U Washer



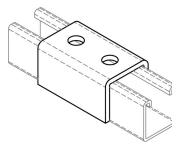
**Fig. 5705**  
2-Hole Splice  
Clevis For #1200  
& #1300 Strut



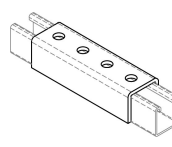
**Fig. 5710**  
3-Hole Splice  
Clevis For #1200  
& #1300 Strut



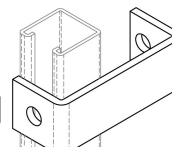
**Fig. 5715**  
4-Hole Splice  
Clevis For #1200  
& #1300 Strut



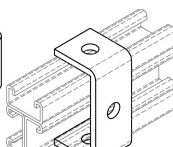
**Fig. 5720**  
2-Hole Splice  
Clevis For #1000  
& #1100 Strut



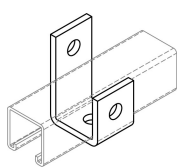
**Fig. 5730 - 5732**  
4-Hole Splice  
Clevis For Strut



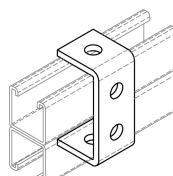
**Fig. 5750 - 5764**  
2-Hole Clevis



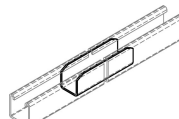
**Fig. 5770**  
3-Hole Clevis



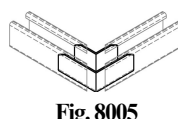
**Fig. 5775**  
3-Hole  
Suspension  
Clevis



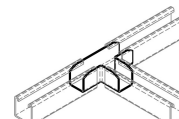
**Fig. 5780**  
4-Hole  
Suspension  
Clevis



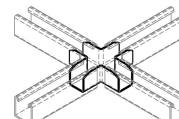
**Fig. 8000 - 8001**  
Inside Strut Joiner



**Fig. 8005**  
90° Elbow Strut  
Joiner

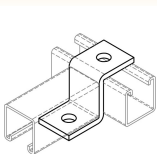


**Fig. 8010**  
Tee Strut Joiner

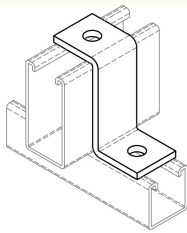


**Fig. 8015**  
Cross Strut Joiner

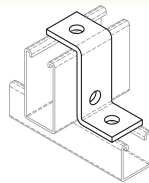
## “Z” SHAPE FITTINGS



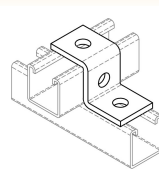
**Fig. 5550**  
2-Hole Offset  
“Z” Support



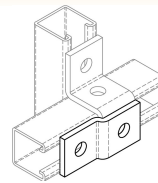
**Fig. 5551 - 5558**  
2-Hole  
“Z” Support



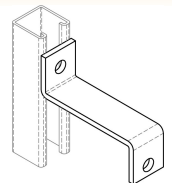
**Fig. 5552**  
3-Hole  
“Z” Support



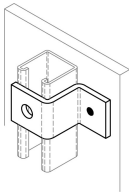
**Fig. 5554**  
3-Hole  
“Z” Support



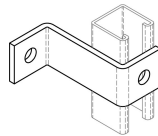
**Fig. 5556**  
2-Hole Offset  
“Z” Support



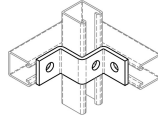
**Fig. 5560 - 5562**  
2-Hole “Z” Bus  
Duct Connection



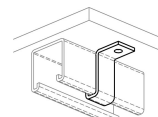
**Fig. 5565**  
Tapped “Z”  
Support



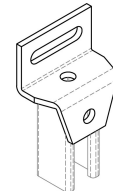
**Fig. 5570 - 5574**  
2-Hole Z  
Supports



**Fig. 5575**  
3-Hole Sheath  
Corner  
Connection

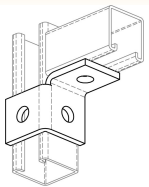


**Fig. 5580 - 5583**  
Channel Hanger  
For Strut

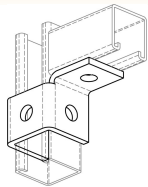


**Fig. 5590**  
Adjustable Offset  
Gussetted “Z”  
Support

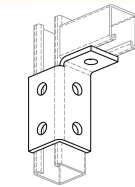
## WING SHAPE FITTINGS



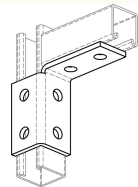
**Fig. 5600 & 5601**  
3-Hole Corner  
Connector



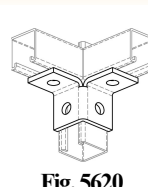
**Fig. 5605 & 5606**  
4-Hole Corner  
Connector



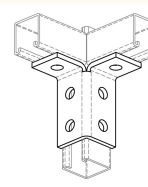
**Fig. 5610 & 5611**  
5-Hole Corner  
Connector



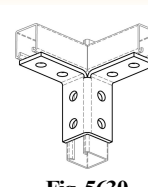
**Fig. 5615 & 5616**  
6-Hole Corner  
Connector



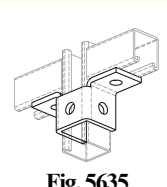
**Fig. 5620**  
4-Hole Double  
Corner Connector



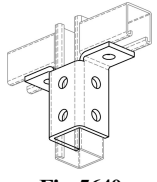
**Fig. 5625**  
6-Hole Double  
Corner Connector



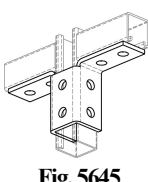
**Fig. 5630**  
8-Hole Double  
Corner Connector



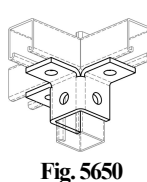
**Fig. 5635**  
5-Hole Double  
Corner Connector



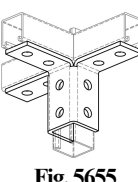
**Fig. 5640**  
8-Hole Double  
Wing Connector



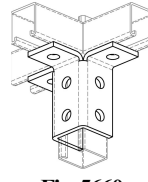
**Fig. 5645**  
10-Hole Double  
Wing Connector



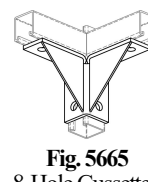
**Fig. 5650**  
6-Hole Triple  
Wing Connector



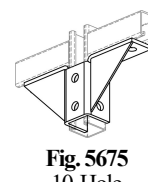
**Fig. 5655**  
12-Hole Triple  
Wing Connector



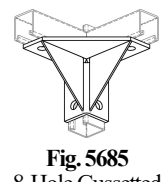
**Fig. 5660**  
9-Hole Triple  
Wing Connector



**Fig. 5665**  
8-Hole Gussetted  
Double Corner  
Connector

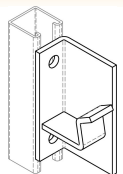


**Fig. 5675**  
10-Hole  
Gussetted Double  
Corner Connector

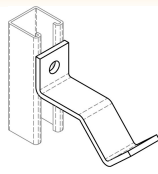


**Fig. 5685**  
8-Hole Gussetted  
Double Corner  
Connector

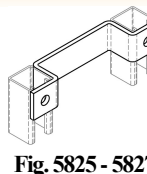
## SPECIALTY FITTINGS



**Fig. 5801 - 5804**  
Single Pipe Axle  
Supports



**Fig. 5821**  
Pipe Support  
Bracket



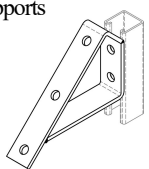
**Fig. 5825 - 5827**  
Series Ladder  
Rungs



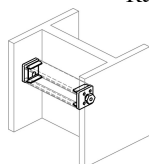
**Fig. 5830 - 5834**  
Wall Ladder  
Brackets



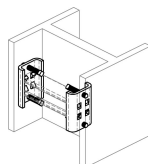
**Fig. 5835 - 5837**  
Pipe Coupling  
Fittings



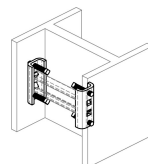
**Fig. 5860 & 5861**  
Stair Supports



**Fig. 8070**  
Column Support  
For 1<sup>5</sup>/<sub>8</sub>” Channel

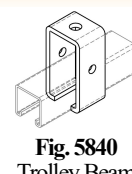


**Fig. 8075**  
Column Support  
For 1<sup>5</sup>/<sub>8</sub>” Channel

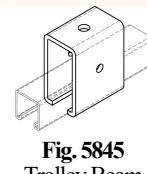


**Fig. 8076**  
Column Support  
For 1<sup>3</sup>/<sub>16</sub>” Channel

## TROLLEY ASSEMBLIES



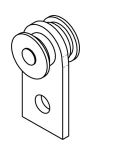
**Fig. 5840**  
Trolley Beam  
Support



**Fig. 5845**  
Trolley Beam  
Joint Support



**Fig. 5870**  
4-Bearing Trolley  
Assembly



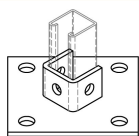
**Fig. 5875**  
2-Bearing Trolley  
Assembly



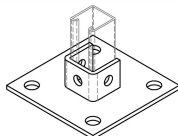
# STRUT PRODUCTS & ACCESSORIES



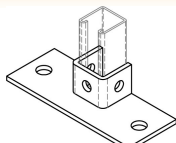
## POST BASES



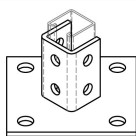
**Fig. 6005**  
Post Base For  
1 5/8" Strut



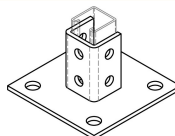
**Fig. 6010**  
Post Base For  
1 5/8" Strut



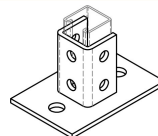
**Fig. 6015**  
Post Base For  
1 5/8" Strut



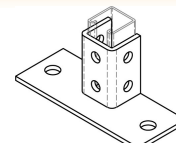
**Fig. 6020**  
Post Base For  
1 5/8" Strut



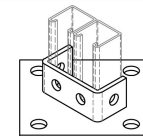
**Fig. 6025**  
Post Base For  
1 5/8" Strut



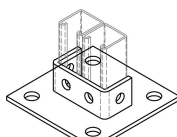
**Fig. 6029**  
Post Base For  
1 5/8" Strut



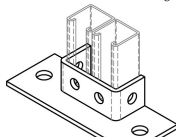
**Fig. 6030**  
Post Base For  
1 5/8" Strut



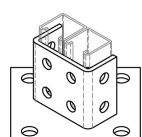
**Fig. 6035**  
Post Base For  
Double 1 5/8" Strut



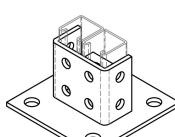
**Fig. 6040**  
Post Base For  
Double 1 5/8" Strut



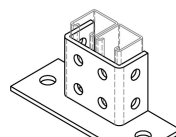
**Fig. 6045**  
Post Base For  
Double 1 5/8" Strut



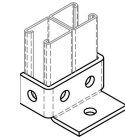
**Fig. 6050**  
Post Base For  
Double 1 5/8" Strut



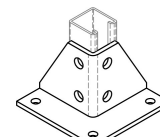
**Fig. 6060**  
Post Base For  
Double 1 5/8" Strut



**Fig. 6065**  
Post Base For  
Double 1 5/8" Strut

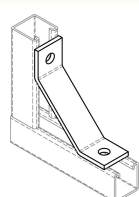


**Fig. 6080**  
Post Base For  
1 5/8" Back To  
Back Strut

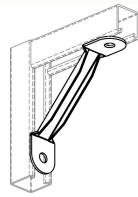


**Fig. 6095**  
Post Base For  
1 5/8" Strut

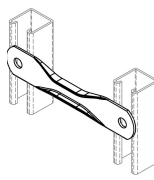
## BRACKETS AND BRACE FITTINGS



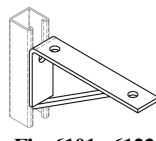
**Fig. 5470 - 5412**  
2-Hole 45 deg.  
Knee Braces



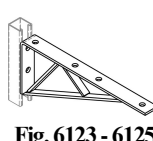
**Fig. 5420 - 5427**  
2-Hole 45 deg.  
Tubing Knee  
Braces



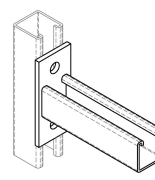
**Fig. 5430 - 5440**  
2-Hole Straight  
Tubing Braces



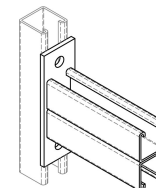
**Fig. 6101 - 6122**  
Shelf Bracket



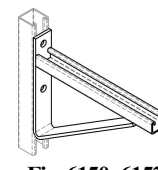
**Fig. 6123 - 6125**  
Shelf Bracket



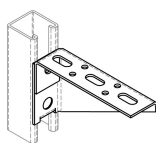
**Fig. 6130 - 6135**  
Single Channel  
Bracket



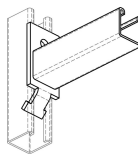
**Fig. 6140 - 6144**  
Double Channel  
Brackets



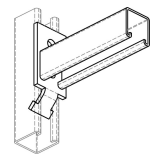
**Fig. 6150 - 6152**  
Braced Single  
Brackets



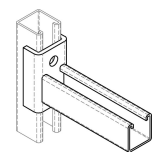
**Fig. 6160 - 6172**  
Braced Single  
Brackets



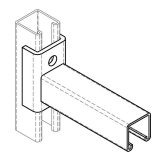
**Fig. 6202 - 6208**  
Interlocking  
Channel Brackets  
(Slot Up)



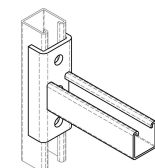
**Fig. 6212 - 6218**  
Interlocking  
Channel Brackets  
(Slot Down)



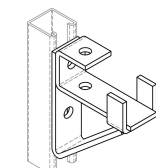
**Fig. 6222 & 6224**  
Wrap-Around  
Channel Bracket  
(Slot Up)



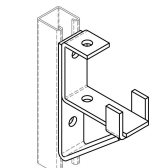
**Fig. 6232 & 6234**  
Wrap-Around  
Channel Brackets  
(Slot Down)



**Fig. 6246 & 6248**  
Wrap-Around  
Channel Bracket  
(Slot Up)

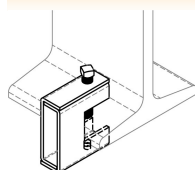


**Fig. 6305**  
Single Channel  
Bracket Support  
For 1 5/8" Strut

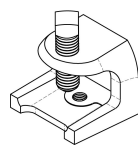


**Fig. 6310**  
Single Channel  
Bracket Support  
For 3/4" Strut

## BEAM CLAMPS



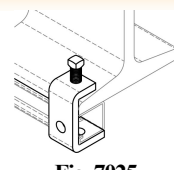
**Fig. 7001 & 7002**  
Heavy Duty  
Beam Clamps



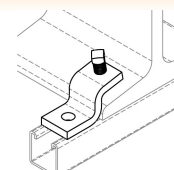
**Fig. 7005 - 7007**  
Beam Clamps



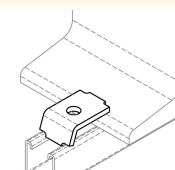
**Fig. 7011 - 7020**  
I-Beam Clamp



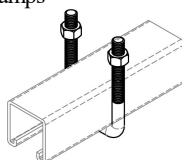
**Fig. 7025**  
I-Beam Clamp



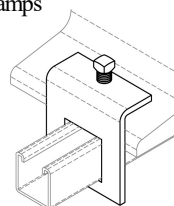
**Fig. 7030**  
"Z" Beam Clamp



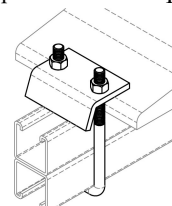
**Fig. 7040**  
Beam Clamp



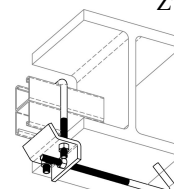
**Fig. 7050 & 7051**  
Square U-Bolts



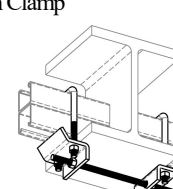
**Fig. 7060**  
Beam Clamp For  
1 5/8" Strut



**Fig. 7070 - 7076**  
Beam Clamp  
For Strut

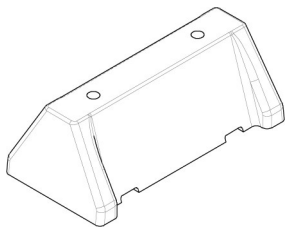


**Fig. 7080 - 7089**  
Beam Clamp

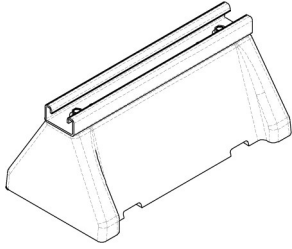


**Fig. 7090 - 7099**  
Beam Clamp

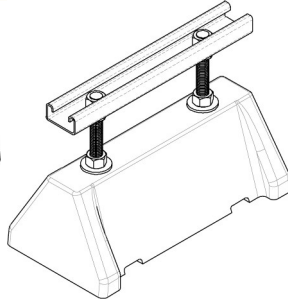
## ROOFTOP SUPPORTS



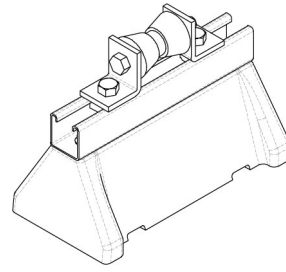
**Fig. RTSB**  
Rooftop Support  
Base



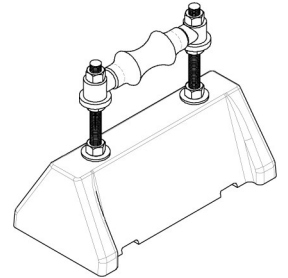
**Fig. SMSB**  
Strut Mounted  
Support Base



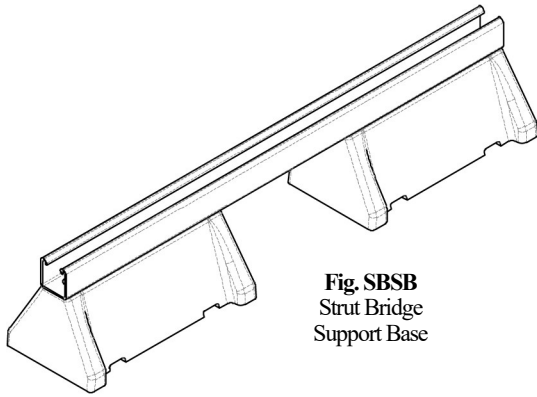
**Fig. SOSB**  
Strut Offset  
Support Base



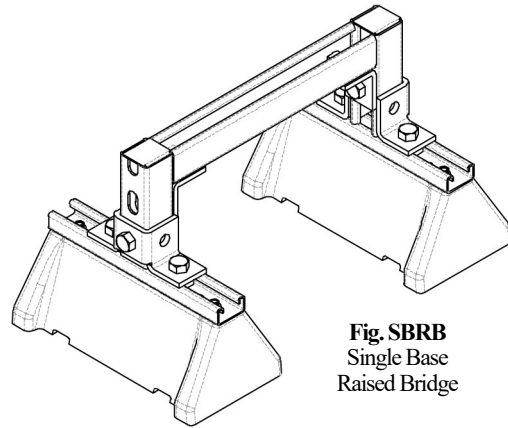
**Fig. RMSB**  
Roller Mounted  
Support Base



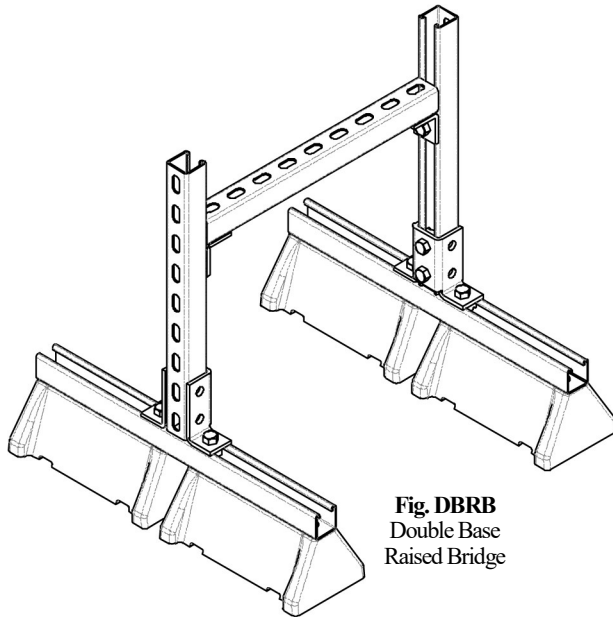
**Fig. ORSB**  
Offset Roller  
Support Base



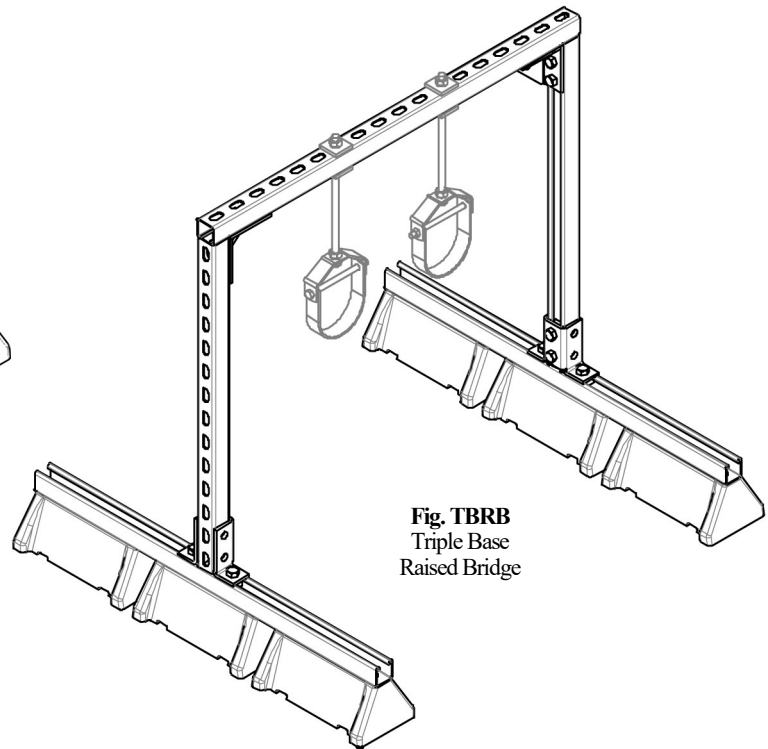
**Fig. SBSB**  
Strut Bridge  
Support Base



**Fig. SBRB**  
Single Base  
Raised Bridge



**Fig. DBRB**  
Double Base  
Raised Bridge



**Fig. TBRB**  
Triple Base  
Raised Bridge



**PHD Manufacturing, Inc.**

44018 Columbiana-Waterford Road  
Columbiana, Ohio 44408

Phone: (800) 321-2736 • (330) 482-9256  
Fax: (330) 482-2763 • [www.phd-mfg.com](http://www.phd-mfg.com)

