

PIPE CLAMPS



WASHER (For Fig. 590)

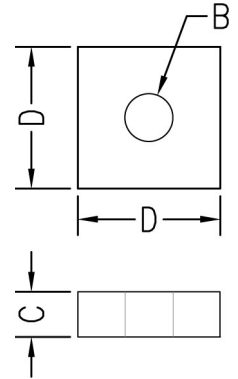
FIG. 595

Function: Designed to secure tie rods when used in conjunction with Fig. 590 four bolt underground pipe clamp.

Material: Carbon steel (Type 304 or 316 Stainless Steel upon request)

Finish: Plain or electro-galvanized (Hot dipped galvanized upon request)

Ordering: Specify figure number, tie rod size, material, and finish.



Tie Rod Size	Dia. B		C		D		For Pipe Sizes		Wt. Each	
		(mm)		(mm)		(mm)		(mm)	lbs.	kg
3/4	7/8	(22.23)	1/2	(12.70)	3	(76.20)	4 - 8	(100 - 200)	1.19	(.54)
1	1 1/8	(28.58)	1/2	(12.70)	3 1/2	(88.90)	10 - 12	(250 - 300)	1.49	(.68)
1 1/4	1 3/8	(34.93)	3/4	(19.05)	3 1/2	(88.90)	14 - 18	(350 - 450)	2.15	(.98)
1 3/8	1 1/2	(38.10)	3/4	(19.05)	3 1/2	(88.90)	20	(500)	1.92	(.87)
1 1/2	1 5/8	(41.28)	3/4	(19.05)	3 1/2	(88.90)	24	(600)	1.85	(.84)