

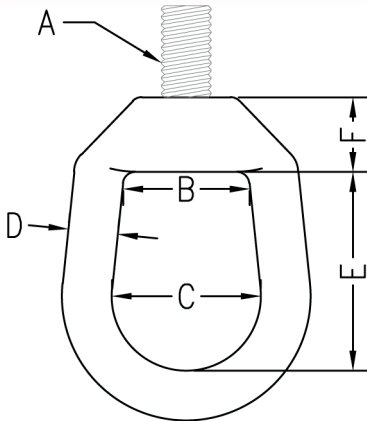


www.phd-mfg.com

THREADED ACCESSORIES

FIG. 35 & 35L

WELDLESS EYE NUT



Function: Designed for use in high strength and high temperature piping applications. Fig. 35L is designed to be used in conjunction with Fig. 960 forged steel turnbuckle, in applications where a vertical adjustment may be necessary.

Right-Hand Threads (**Fig. 35**) or Left-Hand Threads (**Fig. 35L**).

Material: Forged steel (Type 316 Stainless Steel upon request)

Finish: Plain or electro-galvanized (Hot dipped galvanized upon request)

Approvals: Complies with Federal Specifications A-A-1192A (Type 17) and Manufacturers' Standardization Society ANSI/MSS SP-58 (Type 17) which supersedes ANSI/MSS SP-69.

Ordering: Specify figure number, rod size, material, and finish.

NOTE: Supports loads equal to the full limitation of the hanger rod.

Rod Size A	B		C		D		E		F		Max. Rec. Load				Wt. Each	
											650°F (343°C)		750°F (399°C)			
											lbs.	kN	lbs.	kN	lbs.	kg
3/8	1 1/4	(31.75)	1 1/2	(38.1)	1/2	(12.7)	2	(50.8)	1 1/16	(17.46)	730	(3.25)	572	(2.54)	.64	(.29)
1/2	1 1/4	(31.75)	1 1/2	(38.1)	1/2	(12.7)	2	(50.8)	1 1/16	(17.46)	1350	(6.01)	1057	(4.70)	.61	(.28)
5/8	1 1/4	(31.75)	1 1/2	(38.1)	1/2	(12.7)	2	(50.8)	1 1/16	(17.46)	2160	(9.61)	1692	(7.52)	.59	(.27)
3/4	1 1/4	(31.75)	1 1/2	(38.1)	1/2	(12.7)	2	(50.8)	1 1/16	(17.46)	3230	(14.37)	2530	(11.25)	.57	(.26)
7/8	1 11/16	(42.86)	2	(50.8)	3/4	(19.05)	2 5/8	(66.68)	1	(25.4)	4480	(19.93)	3508	(15.61)	1.67	(.76)
1	1 11/16	(42.86)	2	(50.8)	3/4	(19.05)	2 5/8	(66.68)	1	(25.4)	5900	(26.24)	4620	(20.55)	1.65	(.75)
1 1/8	2 1/4	(57.15)	2 1/2	(63.5)	1	(25.4)	3 3/8	(85.73)	1 1/4	(31.75)	7450	(33.14)	5834	(25.95)	3.68	(1.67)
1 1/4	2 1/4	(57.15)	2 1/2	(63.5)	1	(25.4)	3 3/8	(85.73)	1 1/4	(31.75)	9500	(42.26)	7440	(33.09)	3.57	(1.62)
1 1/2	2 1/4	(57.15)	2 1/2	(63.5)	1	(25.4)	3 3/8	(75.73)	1 1/4	(31.75)	13800	(61.39)	10807	(48.07)	3.43	(1.56)

THREADED ACCESSORIES
CPVC STRAPS
BAND HANGERS
BEAM CLAMPS
CLEVIS HANGERS
PIPE ROLLER SUPPORTS
PIPE RING HANGERS
SPLIT RING HANGERS
PIPE CLAMPS
CENTER LOAD BEAM CLAMPS
PIPE SHIELDS, INSULATION, & SADDLES
PIPE GUIDES & SLIDES
WALL BRACKETS
PIPE SUPPORTS
STRUCTURAL ATTACHMENTS
SEISMIC BRACING