

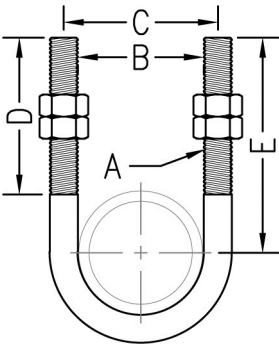


www.phd-mfg.com

THREADED ACCESSORIES

FIG. 90, 91, 93, 94, & 90S

STANDARD U-BOLT



Function: Designed for use as a support, anchor, or guide for various types of pipe. The PVC coating on Fig. 93 protects the surface of the pipe from contact with the metal surface of the U-Bolt.

Material: Carbon steel or Type 304 & 316 Stainless Steel (**Fig. 94**)

Finish: Plain (**Fig. 90**), Electro-Galvanized (**Fig. 91**), or PVC (**Fig. 93**) (Hot dipped galvanized upon request)

Approvals: Complies with Federal Specifications A-A-1192A (Type 24) and Manufacturers' Standardization Society ANSI/MSS SP-58 (Type 24) which supersedes ANSI/MSS SP-69.

Ordering: Specify figure number, pipe size, material, and finish.

NOTE: Regularly furnished with nuts.

Pipe Size		Rod Size A	B	C	D	Tangent E	Max. Rec. Load				Wt. Each	
							650°F (343°C)		750°F (399°C)		lbs.	kg
							lbs.	kN	lbs.	kN		
1/2	(15)	1/4	15/16 (23.81)	13/16 (30.16)	23/8 (60.33)	23/4 (69.85)	580	(2.58)	454	(2.02)	.11	(.05)
3/4	(20)	1/4	11/8 (28.58)	13/8 (34.93)	23/8 (60.33)	23/4 (69.85)	580	(2.58)	454	(2.02)	.12	(.05)
1	(25)	1/4	13/8 (34.93)	15/8 (41.28)	23/8 (60.33)	23/4 (69.85)	580	(2.58)	454	(2.02)	.12	(.05)
1 1/4	(32)	3/8	11 1/16 (42.86)	2 1/16 (52.39)	23/8 (60.33)	2 7/8 (73.03)	1460	(6.49)	1143	(5.09)	.28	(.13)
1 1/2	(40)	3/8	2 (50.80)	23/8 (60.33)	2 1/2 (63.50)	3 (76.20)	1460	(6.49)	1143	(5.09)	.30	(.14)
2	(50)	3/8	2 7/16 (61.91)	2 13/16 (71.44)	2 1/2 (63.50)	3 1/4 (82.55)	1460	(6.49)	1143	(5.09)	.33	(.15)
2 1/2	(65)	1/2	2 5/16 (74.61)	3 7/16 (87.31)	3 (76.20)	3 3/4 (95.25)	2700	(12.01)	2114	(9.41)	.73	(.33)
3	(80)	1/2	3 9/16 (90.49)	4 1/16 (103.19)	3 (76.20)	4 (101.60)	2700	(12.01)	2114	(9.41)	.78	(.35)
3 1/2	(90)	1/2	4 1/16 (103.19)	4 9/16 (115.89)	3 (76.20)	4 1/4 (107.95)	2700	(12.01)	2114	(9.41)	.84	(.38)
4	(100)	1/2	4 9/16 (115.89)	5 1/16 (128.59)	3 (76.20)	4 1/2 (114.30)	2700	(12.01)	2114	(9.41)	.90	(.41)
5	(125)	1/2	5 5/8 (142.88)	6 1/8 (155.58)	3 (76.20)	5 (127.00)	2700	(12.01)	2114	(9.41)	1.01	(.46)
6	(150)	5/8	6 3/4 (171.45)	7 3/8 (187.33)	3 3/4 (95.25)	6 1/8 (155.58)	4320	(19.22)	3383	(15.05)	2.00	(.91)
8	(200)	5/8	8 3/4 (222.25)	9 3/8 (238.13)	3 3/4 (95.25)	7 1/8 (180.98)	4320	(19.22)	3383	(15.05)	2.33	(1.06)
10	(250)	3/4	10 7/8 (276.23)	11 5/8 (295.28)	4 (101.60)	8 3/8 (212.73)	6460	(28.74)	5059	(22.50)	4.91	(2.23)
12	(300)	7/8	12 7/8 (327.03)	13 3/4 (349.25)	4 1/4 (107.95)	9 5/8 (244.48)	8960	(39.86)	7017	(31.21)	7.73	(3.51)
14	(350)	7/8	14 1/8 (358.78)	15 (381.00)	4 1/4 (107.95)	10 1/4 (260.35)	8960	(39.86)	7017	(31.21)	8.30	(3.76)
16	(400)	7/8	16 1/8 (409.58)	17 (431.80)	4 1/4 (107.95)	11 1/4 (285.75)	8960	(39.86)	7017	(31.21)	9.20	(4.17)
18	(450)	1	18 1/8 (460.38)	19 1/8 (485.78)	4 3/4 (120.65)	12 5/8 (320.68)	11800	(52.49)	9241	(41.11)	13.5	(6.12)
20	(500)	1	20 1/8 (511.18)	21 1/8 (536.58)	4 3/4 (120.65)	13 5/8 (346.08)	11800	(52.49)	9241	(41.11)	14.6	(6.62)
24	(600)	1	24 1/8 (612.78)	25 1/8 (638.18)	4 3/4 (120.65)	15 5/8 (396.88)	11800	(52.49)	9241	(41.11)	16.9	(7.67)
30	(750)	1	30 1/8 (765.18)	31 1/8 (790.58)	4 3/4 (120.65)	18 5/8 (473.08)	11800	(52.49)	9241	(41.11)	19.1	(8.66)
36	(900)	1	36 1/8 (917.58)	37 1/8 (942.98)	4 3/4 (120.65)	21 5/8 (549.28)	11800	(52.49)	9241	(41.11)	23.2	(10.52)

Fig. 90S
SPECIAL U-BOLT

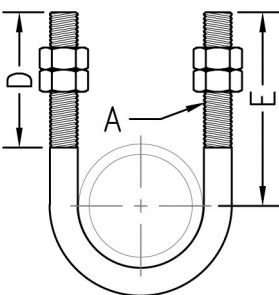


Fig. 90S Special U-Bolts are available upon request. Please specify:

- Figure Number
- Pipe Size
- Rod Size "A"
- Length of Threads "D"
- Tangent "E"
- Material
- Finish

Unless otherwise specified, all dimensions on drawings and in charts are in inches and dimensions shown in parentheses are in millimeters.