

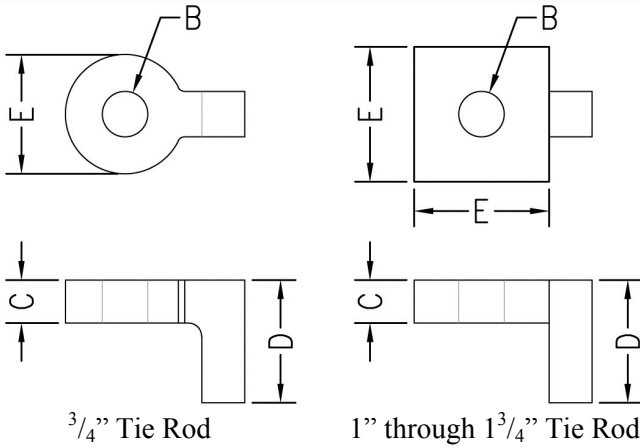


www.phd-mfg.com

PIPE CLAMPS

FIG. 585

WASHER (For Fig. 580)



Function: Designed to secure tie rods when used in conjunction with Fig. 580 two bolt underground pipe clamp.

Material: Carbon steel (Type 304 or 316 Stainless Steel upon request). 3/4" tie rod size is only available in cast iron.

Finish: Plain or electro-galvanized (Hot dipped galvanized upon request)

Ordering: Specify figure number, tie rod size, material, and finish.

Tie Rod Size	Dia. B	C	D	E	For Pipe Sizes		Wt. Each	
					lbs.	kg		
3/4	7/8 (22.23)	5/8 (15.88)	1 3/4 (44.45)	2 5/16 (58.74)	3 - 12	(80 - 300)	.80	(.36)
1	1 1/8 (28.58)	1/2 (12.70)	3 (76.20)	3 1/2 (88.90)	14	(350)	1.45	(.66)
1 1/8	1 1/4 (31.75)	5/8 (15.88)	3 (76.20)	4 (101.60)	16	(400)	2.31	(1.05)
1 1/4	1 3/8 (34.93)	5/8 (15.88)	3 (76.20)	4 (101.60)	18	(450)	2.26	(1.03)
1 3/8	1 1/2 (38.10)	3/4 (19.05)	3 (76.20)	4 (101.60)	20	(500)	2.87	(1.30)
1 1/2	1 5/8 (41.28)	3/4 (19.05)	3 (76.20)	4 (101.60)	24	(600)	2.71	(1.23)
1 3/4	1 7/8 (47.63)	1 (25.40)	3 (76.20)	4 (101.60)	30 - 36	(750 - 900)	4.17	(1.89)

THREADED ACCESSORIES
CPVC STRAPS
BAND HANGERS
BEAM CLAMPS
CLEVIS HANGERS
PIPE ROLLER SUPPORTS
SPLIT RING HANGERS
PIPE CLAMPS
CENTER LOAD BEAM CLAMPS
PIPE SHIELDS, INSULATION, & SADDLES
PIPE GUIDES & SLIDES
WALL BRACKETS
PIPE SUPPORTS
STRUCTURAL ATTACHMENTS
SEISMIC BRACING