

THREADED ACCESSORIES



EYE RODS

FIG. 50 - 55L

Function: Designed for use in hanger assemblies. The welded design allows the eye to develop the full strength of the rod.

Right-Hand Threads (**Fig. 50 & 55**) or Left-Hand Threads (**Fig. 50L & 55L**).

Material: Carbon steel (Type 304 or 316 Stainless Steel upon request)

Finish: Plain or electro-galvanized (Hot dipped galvanized upon request)

Ordering: Specify figure number, length (D), rod size, material, and finish.

Fig. 50 & 50L
EYE ROD

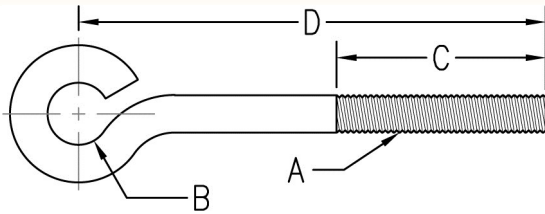
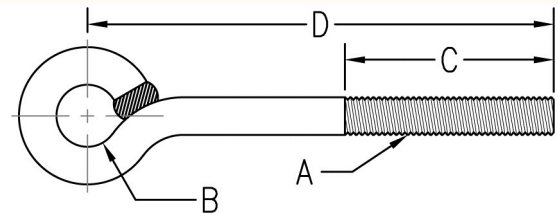


Fig. 55 & 55L
WELDED EYE ROD



Rod Size A	B		Thread Length C		Max. Rec. Load	
					650°F (343°C)	
					lbs.	kN
3/8	5/8	(15.88)	2 1/2	(63.50)	240	(1.07)
1/2	3/4	(19.05)	2 1/2	(63.50)	440	(1.96)
5/8	7/8	(22.23)	2 1/2	(63.50)	705	(3.14)
3/4	1	(25.40)	3	(76.20)	1050	(4.67)
7/8	1 1/8	(28.58)	3 1/2	(88.90)	1470	(6.54)
1	1 1/4	(31.75)	4	(101.60)	1940	(8.63)

Rod Size A	B		Thread Length C		Max. Rec. Load			
					650°F (343°C)		750°F (399°C)	
					lbs.	kN	lbs.	kN
3/8	5/8	(15.88)	2 1/2	(63.50)	730	(3.25)	572	(2.54)
1/2	3/4	(19.05)	2 1/2	(63.50)	1350	(6.01)	1057	(4.70)
5/8	7/8	(22.23)	2 1/2	(63.50)	2160	(9.61)	1692	(7.52)
3/4	1	(25.40)	3	(76.20)	3230	(14.37)	2530	(11.25)
7/8	1 1/8	(28.58)	3 1/2	(88.90)	4480	(19.93)	3508	(15.61)
1	1 1/4	(31.75)	4	(101.60)	5900	(26.24)	4620	(20.55)

Rod Size A	Wt. Each													
	Length D													
	8 (203.2)		10 (254.0)		12 (304.8)		14 (355.6)		18 (457.2)		24 (609.6)		30 (762.0)	
	lbs.	kg	lbs.	kg	lbs.	kg	lbs.	kg	lbs.	kg	lbs.	kg	lbs.	kg
3/8	.32	(0.15)	.38	(0.17)	.44	(0.20)	.50	(0.23)	.63	(0.29)	.80	(0.36)	1.00	(0.45)
1/2	.60	(0.27)	.70	(0.32)	.82	(0.37)	.94	(0.43)	1.16	(0.53)	1.50	(0.68)	1.83	(0.83)
5/8	.97	(0.44)	1.14	(0.52)	1.31	(0.59)	1.49	(0.68)	1.84	(0.83)	2.36	(1.07)	2.88	(1.31)
3/4	1.44	(0.65)	1.68	(0.76)	1.94	(0.88)	2.19	(0.99)	2.68	(1.22)	3.44	(1.56)	4.19	(1.90)
7/8	2.04	(0.93)	2.32	(1.05)	2.68	(1.22)	3.02	(1.37)	3.73	(1.69)	4.72	(2.14)	5.74	(2.60)
1	2.67	(1.21)	3.11	(1.41)	3.56	(1.61)	4.00	(1.81)	4.89	(2.22)	6.78	(3.08)	8.18	(3.71)

Rod Size A	Wt. Each													
	Length D													
	36 (914.4)		42 (1066.8)		48 (1219.2)		54 (1371.6)		60 (1524.0)		66 (1676.4)		72 (1828.8)	
	lbs.	kg	lbs.	kg	lbs.	kg	lbs.	kg	lbs.	kg	lbs.	kg	lbs.	kg
3/8	1.18	(0.54)	1.39	(0.63)	1.58	(0.72)	1.76	(0.80)	1.95	(0.88)	2.14	(0.97)	2.33	(1.06)
1/2	2.17	(0.98)	2.49	(1.13)	2.83	(1.28)	3.16	(1.43)	3.49	(1.58)	3.83	(1.74)	4.06	(1.84)
5/8	3.40	(1.54)	3.92	(1.78)	4.44	(2.01)	4.96	(2.25)	5.48	(2.49)	6.00	(2.72)	6.52	(2.96)
3/4	4.94	(2.24)	5.70	(2.59)	6.45	(2.93)	7.20	(3.27)	7.95	(3.61)	8.70	(3.95)	9.45	(4.29)
7/8	6.76	(3.07)	7.81	(3.54)	8.83	(4.01)	9.85	(4.47)	10.87	(4.93)	11.89	(5.39)	12.91	(5.86)
1	8.89	(4.03)	10.48	(4.75)	11.87	(5.38)	13.19	(5.98)	14.51	(6.58)	15.91	(7.22)	17.25	(7.82)

Unless otherwise specified, all dimensions on drawings and in charts are in inches and dimensions shown in parentheses are in millimeters.

THREADED ACCESSORIES
CPVC STRAPS
BAND HANGERS
BEAM CLAMPS
CLEVIS HANGERS
PIPE ROLLER SUPPORTS
PIPE RING HANGERS
SPLIT RING HANGERS
PIPE CLAMPS
CENTER LOAD BEAM CLAMPS
PIPE SHIELDS, INSULATION, & SADDLES
PIPE GUIDES & SLIDES
WALL BRACKETS
PIPE SUPPORTS
STRUCTURAL ATTACHMENTS
SEISMIC BRACING