

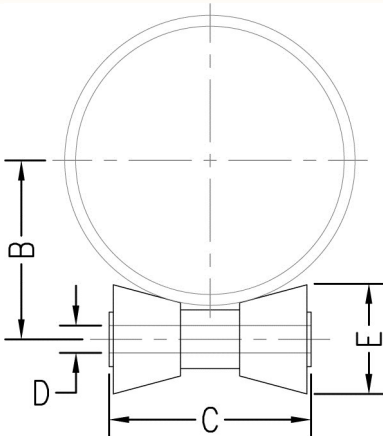


www.phd-mfg.com

PIPE ROLLER SUPPORTS

FIG. 485

SHORT PIPE ROLLER



Function: Designed for supporting pipe in applications where horizontal movement, due to expansion and contraction, will occur.

Material: Cast iron (Type 304 or 316 Stainless Steel upon request)

Finish: Plain or electro-galvanized (Hot dipped galvanized upon request)

Ordering: Specify figure number, pipe roller size, material, and finish.

Pipe Roller Size		B		C		Hole Size D		E		Max. Rec. Load		Wt. Each	
										lbs.	kN	lbs.	kg
2	(50)	1 ¹³ / ₁₆	(46.04)	2 ³ / ₄	(69.85)	9 ¹ / ₁₆	(14.29)	1 ¹⁵ / ₁₆	(49.21)	390	(1.73)	0.81	(0.37)
2 ¹ / ₂	(65)	2 ¹ / ₈	(53.98)	2 ³ / ₄	(69.85)	9 ¹ / ₁₆	(14.29)	1 ¹⁵ / ₁₆	(49.21)	390	(1.73)	0.81	(0.37)
3	(80)	2 ⁷ / ₁₆	(61.91)	2 ³ / ₄	(69.85)	9 ¹ / ₁₆	(14.29)	1 ¹⁵ / ₁₆	(49.21)	390	(1.73)	0.81	(0.37)
3 ¹ / ₂	(90)	2 ¹¹ / ₁₆	(68.26)	2 ³ / ₄	(69.85)	9 ¹ / ₁₆	(14.29)	1 ¹⁵ / ₁₆	(49.21)	390	(1.73)	0.81	(0.37)
4	(100)	3	(76.20)	3 ³ / ₄	(95.25)	9 ¹ / ₁₆	(14.29)	2 ¹ / ₄	(57.15)	950	(4.23)	0.94	(0.42)
5	(125)	3 ⁹ / ₁₆	(90.49)	3 ³ / ₄	(95.25)	9 ¹ / ₁₆	(14.29)	2 ¹ / ₄	(57.15)	950	(4.23)	0.94	(0.42)
6	(150)	4 ¹ / ₈	(104.78)	3 ³ / ₄	(95.25)	9 ¹ / ₁₆	(14.29)	2 ¹ / ₄	(57.15)	950	(4.23)	0.94	(0.42)
8	(200)	5 ¹ / ₄	(133.35)	6	(152.40)	1 ³ / ₁₆	(20.64)	3 ³ / ₁₆	(80.96)	2100	(9.34)	3.19	(1.45)
10	(250)	6 ³ / ₈	(161.93)	6	(152.40)	1 ³ / ₁₆	(20.64)	3 ³ / ₁₆	(80.96)	2100	(9.34)	3.19	(1.45)
12	(300)	7 ¹ / ₂	(190.50)	8	(203.20)	1	(25.40)	4	(101.60)	3075	(13.68)	6.64	(3.01)
14	(350)	8 ³ / ₁₆	(207.96)	8	(203.20)	1	(25.40)	4	(101.60)	3075	(13.68)	6.64	(3.01)
16	(400)	9 ⁵ / ₁₆	(236.54)	9	(228.60)	1 ¹ / ₄	(31.75)	4 ¹ / ₂	(114.30)	4980	(22.15)	8.31	(3.77)
18	(450)	10 ³ / ₈	(263.53)	9	(228.60)	1 ¹ / ₄	(31.75)	4 ¹ / ₂	(114.30)	4980	(22.15)	8.31	(3.77)
20	(500)	11 ⁷ / ₁₆	(290.51)	9	(228.60)	1 ¹ / ₄	(31.75)	4 ¹ / ₂	(114.30)	4980	(22.15)	8.31	(3.77)
24	(600)	13 ⁷ / ₁₆	(341.31)	10	(254.00)	1 ¹ / ₂	(38.10)	4 ³ / ₈	(111.13)	6100	(27.13)	8.40	(3.81)
30	(750)	16 ⁹ / ₁₆	(420.69)	12 ¹ / ₄	(311.15)	1 ⁷ / ₈	(47.63)	5 ³ / ₁₆	(131.76)	7500	(33.36)	14.40	(6.53)
36	(900)	19 ¹¹ / ₁₆	(500.06)	14	(355.60)	2 ¹ / ₈	(53.98)	6	(152.40)	12000	(53.38)	16.80	(7.62)
42	(1050)	22 ³ / ₄	(577.85)	14	(355.60)	2 ¹ / ₈	(53.98)	6	(152.40)	12000	(53.38)	16.80	(7.62)

Unless otherwise specified, all dimensions on drawings and in charts are in inches and dimensions shown in parentheses are in millimeters.