

# THREADED ACCESSORIES



## STEEL EYE SOCKET

**Function:** Designed for attaching hanger rod to wood structures. Secured with Fig. 45 lag screw or two Fig. 48 wood drive screws, see chart.

**Material:** Carbon steel

**Finish:** Electro-galvanized

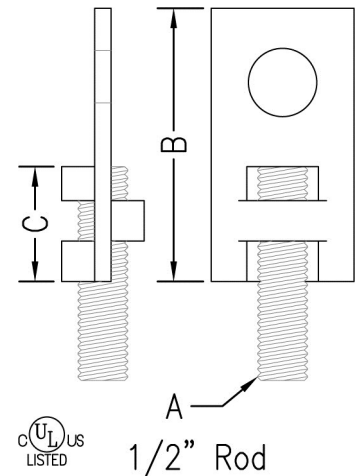
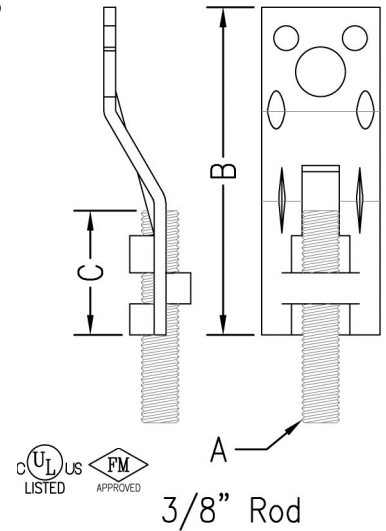
**Approvals:** Underwriters' Laboratories Listed in the U.S. (UL) and Canada (CUL) for  $\frac{3}{8}$ " and  $\frac{1}{2}$ " rod sizes. Factory Mutual Approved for  $\frac{3}{8}$ " rod size only.

**Ordering:** Specify figure number and rod size.

*NOTE: The  $\frac{3}{8}$ " offset design provides full vertical rod adjustment.*

**FIG. 37**

Rod Size A	Max. Pipe Size		Screw Size	B		C		Max. Rec. Load		Wt. Each	
								lbs.	kN	lbs.	kg
$\frac{3}{8}$	2	(50)	(2) #16 x 2	$3\frac{1}{4}$	(82.55)	$1\frac{1}{4}$	(31.75)	400	(1.78)	.11	(.05)
$\frac{3}{8}$	4	(100)	$\frac{1}{2}$ x $2\frac{1}{2}$	$3\frac{1}{4}$	(82.55)	$1\frac{1}{4}$	(31.75)	730	(3.25)	.11	(.05)
$\frac{1}{2}$	8	(200)	$\frac{5}{8}$ x 3	$2\frac{3}{4}$	(69.85)	$1\frac{3}{16}$	(30.16)	1350	(6.01)	.15	(.07)



THREADED ACCESSORIES  
CPVC STRAPS  
BAND HANGERS  
BEAM CLAMPS  
CLEVIS HANGERS  
PIPE ROLLER SUPPORTS  
SPLIT RING HANGERS  
PIPE CLAMPS  
CENTER LOAD BEAM CLAMPS  
PIPE SHIELDS, INSULATION, & SADDLES  
PIPE GUIDES & SLIDES  
WALL BRACKETS  
PIPE SUPPORTS  
STRUCTURAL ATTACHMENTS  
SEISMIC BRACING



**PHD Manufacturing, Inc.**

44018 Columbiana-Waterford Road  
 Columbiana, Ohio 44408-9481  
 Phone: 800-321-2736 • 330-482-9256  
 Fax: 330-482-2763  
 Web: www.phd-mfg.com

**FIGURE 37 INSTALLATION INSTRUCTIONS**

**FUNCTION:** Designed for attaching hanger rod to structures. Allows for full vertical rod adjustment.

**APPROVALS:** Underwriters Laboratories listed for US and Canada and Factory Mutual approved

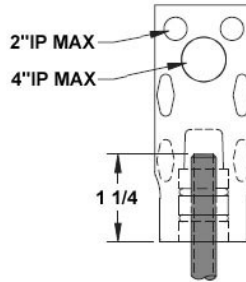
**MATERIAL:** Carbon Steel

**FINISH:** Electro-galvanized

**WARNINGS:** The safety of the total system involves a system designer, installer, and user. The manufacturer has limited or no control over such factors as environmental conditions, total system design, product selection, and maintenance. The installer is responsible for the application to conform to local codes, the integrity of attaching structure, and the use of proper fasteners. Failure to follow these specifications may result in product malfunction. All load ratings are for static conditions and neglect dynamic loading of any kind. Observe all safety regulations for your surroundings while installing.

**INSTALLATION:** Attach Fig. 37 to structure using one Fig. 45, 1/2" X 2 1/2" lag screw, or two Fig. 48's, #16 X 2" wood drive screws, when attaching to wood structure. Refer to NFPA13 when utilizing Fig. 37 in fire protection system or when attaching to structure other than wood. A 3/8" threaded rod can then be threaded into the mounted Fig. 37 and used to support piping. Make sure the rod is threaded at least 1 1/4" into Fig. 37 as shown below.

UL Listed Fasteners		
Pipe Size	Qty.	When Using This fastener
2	2	#16 X 2" Wood Drive Screws
4	1	1/2" X 2 1/2" Lag Screw



*The Complete Line of Pipe Supports and Devices*  
 Pipe Hangers ▲ Strut & Accessories ▲ Pipe Clamps ▲ Beam Clamps ▲ Shields



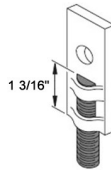
**PHD Manufacturing, Inc.**

44018 Columbiana-Waterford Road  
 Columbiana, Ohio 44408-9481  
 Phone: 800-321-2736 • 330-482-9256  
 Fax: 330-482-2763  
 Web: www.phd-mfg.com

**FIGURE 37 INSTALLATION INSTRUCTIONS**

- FUNCTION:** Designed for attaching hanger rod to structures.
- APPROVALS:** Underwriters Laboratories listed for US and Canada
- MATERIAL:** Carbon Steel
- FINISH:** Electro-galvanized
- WARNINGS:** The safety of the total system involves a system designer, installer, and user. The manufacturer has limited or no control over such factors as environmental conditions, total system design, product selection, and maintenance. The installer is responsible for the application to conform to local codes, the integrity of attaching structure, and the use of proper fasteners. Failure to follow these specifications may result in product malfunction. All load ratings are for static conditions and neglect dynamic loading of any kind. Observe all safety regulations for your surroundings while installing.
- INSTALLATION:** Attach Fig. 37 to structure using one Fig. 45, 5/8" X 3" lag screw, when attaching to wood structure. Fig. 37 must be installed in accordance with the requirements of NFPA 13 when utilizing in fire protection system. A 1/2" threaded rod can then be threaded into the mounted Fig. 37 and used to support piping. Thread rod into product fully, roughly 1 3/16", until it bottoms out into Fig. 37 as shown below.

UL Listed Fasteners		
Pipe Size	Qty.	When Using This fastener
8	1	5/8" X 3" Lag Screw



*The Complete Line of Pipe Supports and Devices*  
 Pipe Hangers ▲ Strut & Accessories ▲ Pipe Clamps ▲ Beam Clamps ▲ Shields