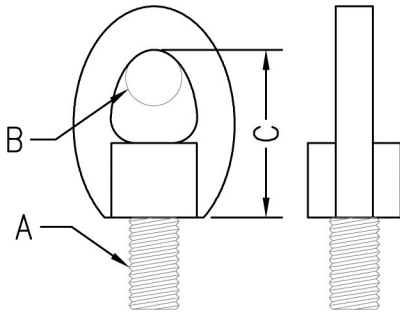


THREADED ACCESSORIES

FIG. 30

EYE SOCKET



- Function:** Designed for attaching hanger rod to various types of hanger attachments.
- Material:** Malleable iron
- Finish:** Plain or electro-galvanized
- Approvals:** Complies with Federal Specifications A-A-1192A (Type 16) and Manufacturers' Standardization Society ANSI/MSS SP-58 (Type 16) which supersedes ANSI/MSS SP-69.
- Ordering:** Specify figure number, rod size, and finish.

Rod Size A	For Pipe Sizes		Max. Bolt Size B		C		Max. Rec. Load		Wt. Each	
							lbs.	kN	lbs.	kg
1/4	3/8	(10)	1/4	(6.35)	1 3/8	(34.93)	240	(1.07)	.08	(.04)
3/8	1/2 to 2	(15 to 50)	1/4	(6.35)	1 3/8	(34.93)	610	(2.71)	.08	(.04)
1/2	2 1/2 to 3 1/2	(65 to 90)	1/4	(6.35)	1 9/16	(39.69)	1000	(4.45)	.11	(.05)
5/8	4 & 5	(100 & 125)	3/8	(9.53)	1 3/4	(44.45)	1400	(6.23)	.22	(.10)
3/4	6 & 8	(150 & 200)	1/2	(12.7)	2 1/4	(57.15)	2200	(9.79)	.30	(.14)
7/8	10 & 12	(250 & 300)	1/2	(12.7)	2 7/16	(61.91)	2300	(10.23)	.32	(.15)