

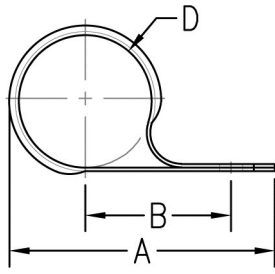


www.phd-mfg.com

# CPVC STRAPS

## FIG. 075

## CPVC ONE-HOLE WRAP AROUND



**Function:** Designed to support CPVC pipe horizontally from the side of a beam. Fig. 075 must be installed with the mounting tab oriented over top of piping on the side of a beam. Fig. 075 can only be used as a guide on top of beam or on vertical piping. Fig. 075 may be installed onto wood using supplied fasteners or into, minimum 20 gauge, steel using one 1/4" X 1" tek type screw (not included). Features flared edges to protect piping as it slides through the installed fitting.

**Size:** 3/4" (20) through 2" (50) CPVC pipe.

**Material:** Carbon Steel

**Finish:** Pre-galvanized

**Approvals:** Underwriters Laboratories listed for US and Canada.

**Ordering:** Specify figure number and pipe size.

Pipe Size		A		B		D Nominal		Box Qty.	Max. Spacing		Appx. Wt. Per 100	
									ft.	m	lbs.	kg
3/4	(20)	2 3/8	(60.33)	1 3/8	(34.93)	1.050	(26.67)	100	5.5	(1.68)	8.70	(3.95)
1	(25)	2 5/8	(66.68)	1 7/16	(36.51)	1.315	(33.40)	100	6	(1.83)	9.40	(4.26)
1 1/4	(32)	2 7/8	(73.03)	1 9/16	(39.69)	1.660	(42.16)	100	6.5	(1.98)	11.00	(4.99)
1 1/2	(40)	3 1/16	(77.79)	1 5/8	(41.28)	1.900	(48.26)	100	7	(2.13)	11.90	(5.40)
2	(50)	3 7/16	(87.31)	1 13/16	(46.04)	2.375	(60.33)	100	8	(2.44)	14.10	(6.40)

THREADED ACCESSORIES  
 CPVC STRAPS  
 BAND HANGERS  
 BEAM CLAMPS  
 CLEVIS HANGERS  
 PIPE ROLLER SUPPORTS  
 SPLIT RING HANGERS  
 PIPE CLAMPS  
 CENTER LOAD BEAM CLAMPS  
 PIPE SHIELDS, INSULATION, & SADDLES  
 PIPE GUIDES & SLIDES  
 WALL BRACKETS  
 PIPE SUPPORTS  
 STRUCTURAL ATTACHMENTS  
 SEISMIC BRACING



**PHD Manufacturing, Inc.**

44018 Columbiana-Waterford Road  
 Columbiana, Ohio 44408-9481  
 Phone: 800-321-2736 • 330-482-9256  
 Fax: 330-482-2763  
 Web: www.phd-mfg.com

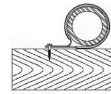
**FIGURE 075 INSTALLATION INSTRUCTIONS**

**FUNCTION:** Designed to support CPVC pipe horizontally from the side of a beam. **Fig. 075 must be installed with the mounting tab oriented over top of piping on the side of a beam as illustrated below. Fig. 075 can only be used as a guide on top of beam or on vertical piping.** Fig. 075 may be installed onto wood using supplied fasteners or into, minimum 20 gauge, steel using one 1/4" X 1" tek type screw. Features flared edges to protect piping as it slides through the installed fitting.

**ORIENTATIONS:**



**SUPPORT**



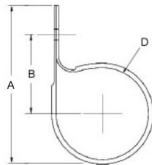
**GUIDE**

**APPROVALS:** Underwriters Laboratories listed for US and Canada  
**MATERIAL:** Carbon Steel Fitting and one #10 X 1" hardened unslotted indented hex head self threading screw

**FINISH:** Pre-galvanized G-90

**WARNINGS:** The safety of the total system involves a system designer, installer, and user. The manufacturer has limited or no control over such factors as environmental conditions, total system design, product selection, and maintenance. The installer is responsible for the application to conform to local codes, the integrity of attaching structure, and the use of proper fasteners. Failure to follow these specifications may result in product malfunction. All load ratings are for static conditions and neglect dynamic loading of any kind. Observe all safety regulations for your surroundings while installing.

**INSTALLATION:** Wrap strap around CPVC pipe or slide over end of pipe, Fig. 075 should slide freely on pipe. Then orient and mount strap to surface where applicable taking into account the maximum spacing allowed between straps. Install in compliance with NFPA and local codes. **DO NOT** use impact tools when installing. No pre-drilling is required when utilizing supplied fasteners.



Pipe Size	A	B	D Nominal	Material Size	Max Spacing
3/4	2 3/8	1 3/8	1.050	20 ga. X 1 1/8"	5'-6"
1	2 5/8	1 7/16	1.315	20 ga. X 1 1/8"	6'-0"
1 1/4	2 7/8	1 9/16	1.660	20 ga. X 1 1/8"	6'-6"
1 1/2	3 1/16	1 5/8	1.900	20 ga. X 1 1/8"	7'-0"
2	3 7/16	1 13/16	2.375	20 ga. X 1 1/8"	8'-0"