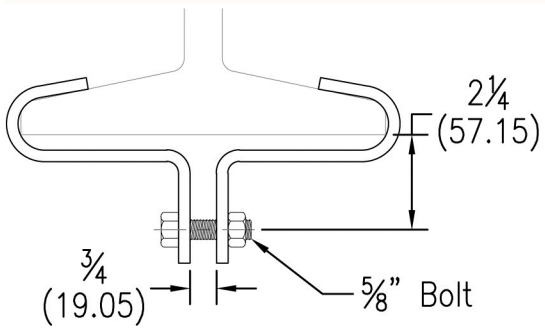


CENTER LOAD BEAM CLAMPS

FIG. 620

HEAVY DUTY CENTER LOAD BEAM CLAMP



Function: Designed to be used in the suspension of a hanger rod from the center of an I-beam. The clamp's design allows the load to be distributed equally on either side of the beam. Normally used in conjunction with Fig. 55 welded eye rod or Fig. 35 weldless eye nut.

Material: Carbon steel (Type 304 or 316 Stainless Steel upon request)
Finish: Plain or electro-galvanized (Hot dipped galvanized with electro-galvanized hardware upon request)

Approvals: Complies with Federal Specification A-A-1192A (Type 21) and Manufacturers' Standardization Society ANSI/MSS SP-58 (Type 21) which supersedes ANSI/MSS SP-69.

Ordering: Specify figure number, flange width, material, and finish.

| Flange Width | | Max. Flange Thickness | | Max. Rec. Load | | Wt. Each | |
|--------------|---------|-----------------------|---------|----------------|---------|----------|--------|
| | | | | lbs. | kg | lbs. | kg |
| 4 | (101.6) | 1/2 | (12.70) | 3000 | (13.34) | 3.92 | (1.78) |
| 5 | (127.0) | 5/8 | (15.88) | 3000 | (13.34) | 4.28 | (1.94) |
| 6 | (152.4) | 3/4 | (19.05) | 3000 | (13.34) | 4.45 | (2.02) |
| 7 | (177.8) | 7/8 | (22.23) | 3000 | (13.34) | 4.76 | (2.16) |
| 8 | (203.2) | 7/8 | (22.23) | 3000 | (13.34) | 5.25 | (2.38) |
| 9 | (228.6) | 1 | (25.40) | 3000 | (13.34) | 5.73 | (2.60) |
| 10 | (254.0) | 1 | (25.40) | 3000 | (13.34) | 5.94 | (2.69) |
| 11 | (279.4) | 1 | (25.40) | 3000 | (13.34) | 6.53 | (2.96) |
| 12 | (304.8) | 1 1/4 | (31.75) | 3000 | (13.34) | 6.97 | (3.16) |

NOTE: Spacer is furnished for use with Fig. 35 weldless eye nuts. Spacer may be removed for use with Fig. 50 eye rod or Fig. 55 welded eye rod.