

BAND HANGERS



COPPER TUBING SWIVEL RING HANGER

FIG. 152 & 154

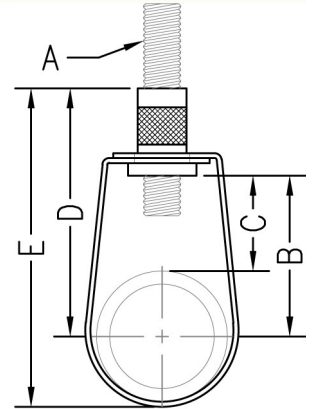
Function: Designed for the suspension of non-insulated stationary copper tubing. The knurled insert allows for vertical adjustment after installation. The PVC coating on Fig. 154 protects the tubing from contact with the metal surface of the hanger.

Material: Carbon steel

Finish: Copper color epoxy (Fig. 152) Copper color epoxy with PVC coating (Fig. 154)

Approvals: Complies with Federal Specification A-A-1192A (Type 10) and Manufacturers' Standardization Society ANSI/MSS SP-58 (Type 10) which supersedes ANSI/MSS SP-69.

Ordering: Specify figure number and tube size.



Tube Size		Rod Size	B		Adj. C		D		E		Max. Rec. Load		Wt. Each	
											lbs.	kN	lbs.	kg
1/2	(15)	3/8	1 13/16	(46.04)	1 1/2	(38.10)	2 11/16	(68.26)	3	(76.20)	300	(1.33)	.08	(.04)
3/4	(20)	3/8	1 5/8	(41.28)	1 3/16	(30.16)	2 1/2	(63.50)	2 15/16	(74.61)	300	(1.33)	.08	(.04)
1	(25)	3/8	1 9/16	(39.69)	1	(25.40)	2 9/16	(65.09)	3	(76.20)	300	(1.33)	.08	(.04)
1 1/4	(32)	3/8	1 5/8	(41.28)	1 5/16	(23.81)	2 1/2	(63.50)	3 3/16	(80.96)	300	(1.33)	.09	(.04)
1 1/2	(40)	3/8	1 11/16	(42.86)	7/8	(22.23)	2 9/16	(65.09)	3 3/8	(85.73)	300	(1.33)	.09	(.04)
2	(50)	3/8	2 7/16	(61.91)	1 3/8	(34.93)	3 5/16	(84.14)	4 3/8	(111.13)	300	(1.33)	.11	(.05)
2 1/2	(65)	3/8	2 13/16	(71.44)	1 1/2	(38.10)	3 7/8	(98.43)	5 9/16	(141.29)	525	(2.34)	.26	(.12)
3	(80)	3/8	3 1/8	(79.38)	1 9/16	(39.69)	4 3/16	(106.36)	5 3/4	(146.05)	525	(2.34)	.28	(.13)
3 1/2	(90)	3/8	3 1/2	(88.90)	1 11/16	(42.86)	4 9/16	(115.89)	6 3/8	(161.93)	525	(2.34)	.33	(.15)
4	(100)	3/8	3 3/4	(95.25)	1 11/16	(42.86)	4 13/16	(122.24)	6 15/16	(176.21)	650	(2.89)	.33	(.15)
5	(125)	1/2	4 1/8	(104.78)	1 9/16	(39.69)	5 3/16	(131.76)	7 13/16	(198.44)	1000	(4.45)	.56	(.25)
6	(150)	1/2	4 5/8	(117.48)	1 9/16	(39.69)	5 11/16	(144.46)	8 15/16	(227.01)	1000	(4.45)	.65	(.29)