

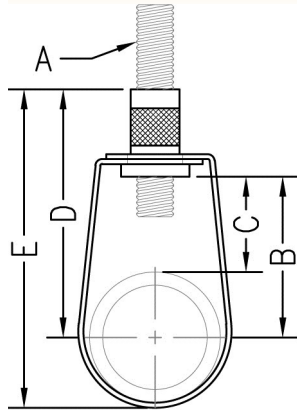


www.phd-mfg.com

BAND HANGERS

FIG. 143

PVC COATED SWIVEL RING HANGER



Function: Designed for the suspension of non-insulated stationary pipe lines. The PVC coating on Fig. 143 protects the pipe from contact with the metal surface of the hanger. Frequently used with Aluminum, Glass, Plastic, Brass, or Copper pipe lines. This product is NOT compatible with CPVC pipe.

Material: Carbon steel

Finish: Pre-galvanized with PVC coating

Approvals: Underwriters' Laboratories Listed in the U.S. (UL), Canada (CUL), and Factory Mutual Approved for sizes $\frac{3}{4}$ " (20mm) to 8" (200mm). Complies with Federal Specifications A-A-1192A (Type 10), and Manufacturers' Standardization Society ANSI/MSS SP-58 (Type 10) which supersedes ANSI/MSS SP-69.

Ordering: Specify figure number and pipe size.

NOTE: Metric knurl insert nuts available upon request



Pipe Size		Rod Size	B		Adj. C		D		E		Max. Rec. Load		Wt. Each	
											lbs.	kN	lbs.	kg
1/2	(15)	3/8	17/8	(47.63)	17/16	(36.51)	23/4	(69.85)	31/16	(77.79)	300	(1.33)	.11	(.05)
3/4	(20)	3/8	111/16	(42.86)	11/8	(28.58)	21/2	(63.50)	31/16	(77.79)	300	(1.33)	.13	(.06)
1	(25)	3/8	15/8	(41.28)	1	(25.40)	21/2	(63.50)	33/16	(80.96)	300	(1.33)	.13	(.06)
1 1/4	(32)	3/8	115/16	(49.21)	11/16	(26.99)	213/16	(71.44)	39/16	(90.49)	300	(1.33)	.15	(.07)
1 1/2	(40)	3/8	21/8	(53.98)	11/16	(26.99)	31/8	(79.38)	37/8	(98.43)	300	(1.33)	.17	(.08)
2	(50)	3/8	27/16	(61.91)	11/8	(28.58)	35/16	(84.14)	43/8	(111.13)	300	(1.33)	.18	(.08)
2 1/2	(65)	3/8	31/16	(77.79)	15/8	(41.28)	315/16	(100.01)	53/8	(136.53)	525	(2.34)	.19	(.09)
3	(80)	3/8	311/16	(93.66)	17/8	(47.63)	49/16	(115.89)	65/16	(160.34)	525	(2.34)	.23	(.10)
3 1/2	(90)	3/8	33/4	(95.25)	17/8	(47.63)	45/8	(117.48)	65/8	(168.28)	525	(2.34)	.25	(.11)
4	(100)	3/8	43/16	(106.36)	17/8	(47.63)	51/16	(128.59)	75/16	(185.74)	650	(2.89)	.30	(.14)
5	(125)	1/2	45/8	(117.48)	15/8	(41.28)	55/8	(142.88)	83/8	(212.73)	1000	(4.45)	.50	(.23)
6	(150)	1/2	55/8	(142.88)	21/4	(57.15)	61/2	(165.10)	913/16	(249.24)	1000	(4.45)	.58	(.26)
8	(200)	1/2	613/16	(173.04)	27/16	(61.91)	715/16	(201.61)	121/4	(311.15)	1000	(4.45)	.90	(.41)

Unless otherwise specified, all dimensions on drawings and in charts are in inches and dimensions shown in parentheses are in millimeters.

- THREADED ACCESSORIES
- CPVC STRAPS
- BAND HANGERS**
- BEAM CLAMPS
- CLEVIS HANGERS
- PIPE ROLLER SUPPORTS
- SPLIT RING HANGERS
- PIPE CLAMPS
- CENTER LOAD BEAM CLAMPS
- PIPE SHIELDS, INSULATION, & SADDLES
- PIPE GUIDES & SLIDES
- WALL BRACKETS
- PIPE SUPPORTS
- STRUCTURAL ATTACHMENTS
- SEISMIC BRACING