

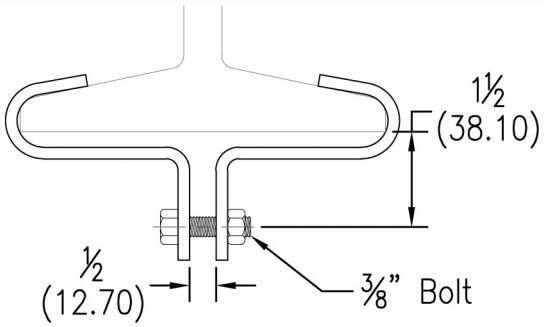


www.phd-mfg.com

CENTER LOAD BEAM CLAMPS

FIG. 610

STANDARD DUTY CENTER LOAD BEAM CLAMP



Function: Designed to be used in the suspension of a hanger rod from the center of an I-beam. The clamp's design allows the load to be distributed equally on either side of the beam. Normally used in conjunction with Fig. 50 eye rod, Fig. 55 welded eye rod, or Fig. 35 weldless eye nut.

Material: Carbon steel (Type 304 or 316 Stainless Steel upon request)
Finish: Plain or electro-galvanized (Hot dipped galvanized with electro-galvanized hardware upon request)

Approvals: Complies with Federal Specification A-A-1192A (Type 21) and Manufacturers' Standardization Society ANSI/MSS SP-58 (Type 21) which supersedes ANSI/MSS SP-69.

Ordering: Specify figure number, flange width, material, and finish.

Flange Width		Max. Flange Thickness		Max. Rec. Load		Wt. Each	
				lbs.	kg	lbs.	kg
3	(76.2)	7/16	(11.11)	1000	(4.45)	.85	(.39)
4	(101.6)	1/2	(12.70)	1000	(4.45)	.88	(.40)
5	(127.0)	5/8	(15.88)	1000	(4.45)	1.10	(.50)
6	(152.4)	3/4	(19.05)	1000	(4.45)	1.13	(.51)
7	(177.8)	7/8	(22.23)	1000	(4.45)	1.23	(.56)
8	(203.2)	7/8	(22.23)	1000	(4.45)	1.25	(.57)
9	(228.6)	1	(25.40)	1000	(4.45)	1.43	(.65)
10	(254.0)	1	(25.40)	1000	(4.45)	1.52	(.69)
11	(279.4)	1	(25.40)	1000	(4.45)	1.63	(.74)
12	(304.8)	1 1/4	(31.75)	1000	(4.45)	1.71	(.78)

NOTE: Spacer is furnished for use with Fig. 35 weldless eye nuts. Spacer may be removed for use with Fig. 50 eye rod or Fig. 55 welded eye rod

THREADED ACCESSORIES
 CPVC STRAPS
 BAND HANGERS
 BEAM CLAMPS
 CLEVIS HANGERS
 PIPE ROLLER SUPPORTS
 PIPE RING HANGERS
 SPLIT RING HANGERS
 PIPE CLAMPS
 CENTER LOAD BEAM CLAMPS
 PIPE SHIELDS, INSULATION, & SADDLES
 PIPE GUIDES & SLIDES
 WALL BRACKETS
 PIPE SUPPORTS
 STRUCTURAL ATTACHMENTS
 SEISMIC BRACING