

# CENTER LOAD BEAM CLAMPS

**FIG. 632 & 633**

## STEEL CENTER LOAD BEAM CLAMP

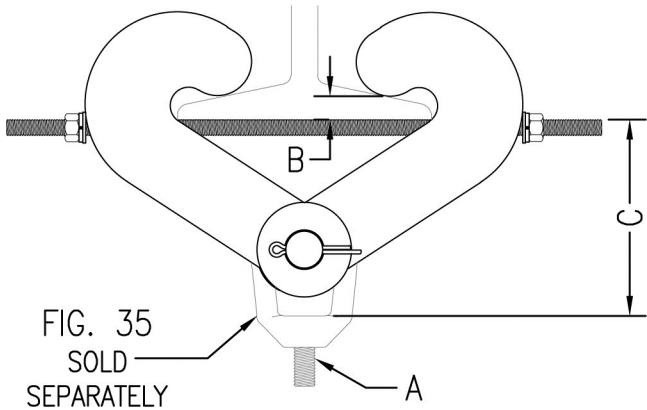
**Function:** Designed to be used in the suspension of a hanger rod from the center of an I-beam. The clamp's design allows the load to be distributed equally on either side of the beam. The clamp is adjustable and normally used in conjunction with Fig. 35 weldless eye nut. An additional 1" (25.4) or more of vertical adjustment is obtained when used with Fig. 35.

**Material:** Carbon steel (Type 304 or 316 Stainless Steel upon request)

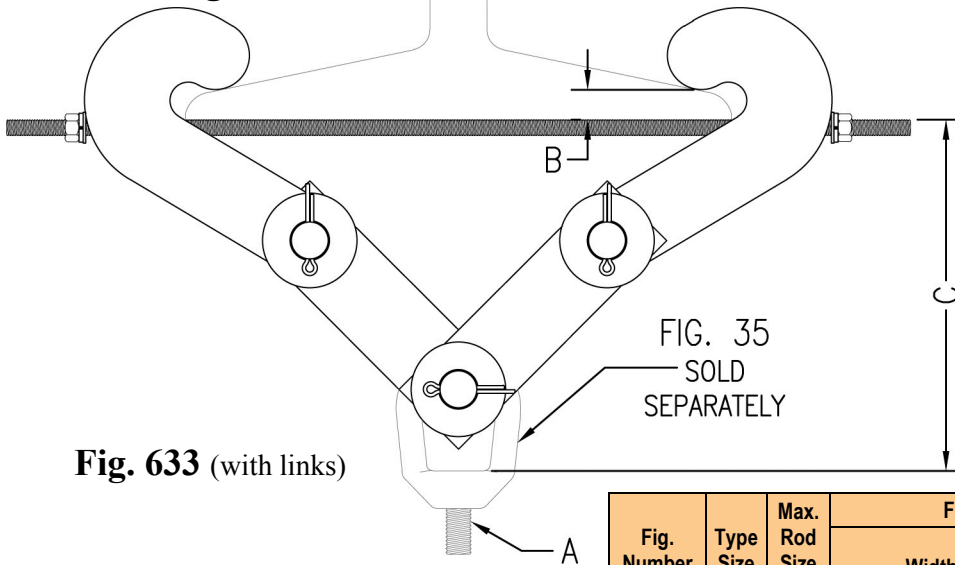
**Finish:** Plain or electro-galvanized (Hot dipped galvanized with electro-galvanized hardware upon request)

**Approvals:** Complies with Federal Specification A-A-1192A (Type 28 without links) (Type 29 with links) and Manufacturers' Standardization Society ANSI/MSS SP-58 (Type 28 without links) (Type 29 with links) which supersedes ANSI/MSS SP-69.

**Ordering:** Specify figure number, type size, material, and finish.



**Fig. 632** (without links)



**Fig. 633** (with links)

Fig. Number	Type Size	Max. Rod Size A	Flange Size		Max. Rec. Load		Appx. Wt. Each			
			Width	Max. Thickness B	lbs.	kN	lbs.	Kg		
632	A	1	3-8	(76.2-203.2)	3/4	(19.05)	5000	(22.24)	9.8	(4.42)
632	B	1 1/2	5-11	(127.0-279.4)	1	(25.40)	11500	(51.15)	25.0	(11.35)
633	A	1	7-15	(177.8-381.0)	3/4	(19.05)	5000	(22.24)	13.5	(6.12)
633	B	1 1/2	8-16	(203.2-406.4)	1	(25.40)	11500	(51.15)	33.1	(15.01)

Based on allowable stresses shown in ANSI Code for Pressure Piping

Fig. Number	Type Size	Rod Take-out for Width of Beam Flange with Max. Rod Size C													
		3 (76.2)		4 (101.6)		5 (127.0)		6 (152.4)		7 (177.8)		8 (203.2)		9 (228.6)	
632	A	5 3/16	(131.76)	5 1/8	(130.18)	5	(127.00)	4 13/16	(122.24)	4 3/8	(111.13)	3 15/16	(100.01)	--	--
632	B	--	--	--	--	7 1/2	(190.50)	7	(177.80)	6 3/4	(171.45)	6 1/2	(165.10)	6 1/4	(158.75)
633	A	--	--	--	--	--	--	--	--	9 1/2	(241.30)	9 3/8	(238.13)	9 1/4	(234.95)
633	B	--	--	--	--	--	--	--	--	--	--	11 3/4	(298.45)	11 1/4	(285.75)

Fig. Number	Type Size	Rod Take-out for Width of Beam Flange with Max. Rod Size C													
		10 (254.0)		11 (279.4)		12 (304.8)		13 (330.2)		14 (355.6)		15 (381.0)		16 (406.4)	
632	A	--	--	--	--	--	--	--	--	--	--	--	--	--	--
632	B	6	(152.40)	5 7/8	(149.23)	--	--	--	--	--	--	--	--	--	--
633	A	9 1/8	(231.78)	8 7/8	(225.43)	8 1/2	(215.90)	8 1/8	(206.38)	7 3/4	(196.85)	7 1/8	(180.98)	--	--
633	B	11	(279.40)	10 7/8	(276.23)	10 3/4	(273.05)	10 5/8	(269.88)	10 1/4	(260.35)	9 7/8	(250.83)	9 3/8	(238.13)

Unless otherwise specified, all dimensions on drawings and in charts are in inches and dimensions shown in parentheses are in millimeters.