

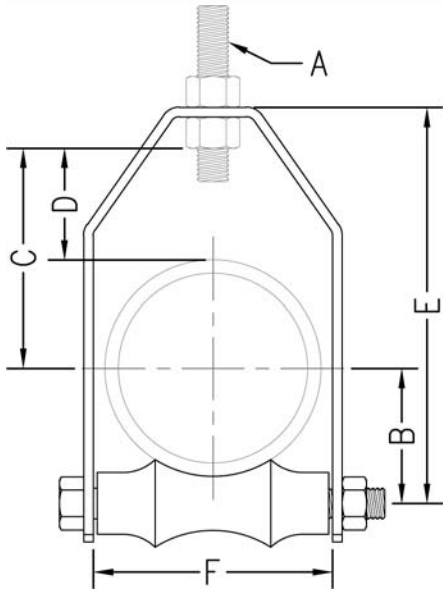


www.phd-mfg.com

PIPE ROLLER SUPPORTS

FIG. 470 & 475

PIPE ROLLER HANGER



(Fig. 470)

Without adjusting swivel

Function:

Designed for suspending pipe in applications where horizontal movement, due to expansion and contraction, will occur and vertical adjustment is necessary. The knurled insert provided with Fig. 475 allows easier vertical adjustment.

Sizing:

Pipe roller size shown is for bare pipe. For proper sizing with insulation, refer to pipe roller selection guide, which is for use with pipe covering protection saddles.

Material:

Cast iron pipe roller with carbon steel frame, axle, and hex nuts. (Type 304 or 316 Stainless Steel upon request)

Finish:

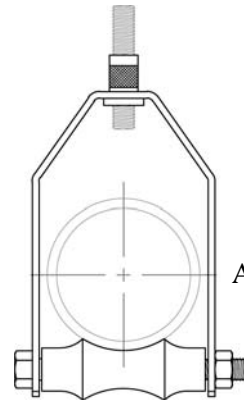
Plain or electro-galvanized (Hot dipped galvanized with electro-galvanized hardware upon request)

Approvals:

Complies with Federal Specification A-A-1192A (Type 43) and Manufacturers' Standardization Society ANSI/MSS SP-58 (Type 43) which supersedes ANSI/MSS SP-69.

Ordering:

Specify figure number, pipe roller size, material, and finish.



(Fig. 475)

With adjusting swivel

Available up to 8" (200) Pipe Roller Size

NOTE: For Fig. 470 use of an upper locknut ensures proper performance.

Pipe Roller Size		Rod Size A	B		C		Adjustment D		E		F		Max. Rec. Load		Wt. Each	
													lbs.	kN	lbs.	kg
2	(50)	3/8	1 5/8	(41.28)	2 5/8	(66.68)	1 1/16	(26.99)	4 3/8	(111.13)	3	(76.20)	150	(0.67)	1.05	(.48)
2 1/2	(65)	1/2	2	(50.80)	2 3/8	(60.33)	1 3/16	(30.16)	5	(127.00)	3 1/4	(82.55)	225	(1.00)	1.29	(.59)
3	(80)	1/2	2 1/4	(57.15)	3 1/2	(88.90)	1 3/4	(44.45)	6 3/8	(161.93)	3 7/8	(98.43)	310	(1.38)	1.56	(.71)
3 1/2	(90)	1/2	2 5/8	(66.68)	3 3/4	(95.25)	1 3/4	(44.45)	7	(177.80)	4 3/8	(111.13)	390	(1.73)	1.83	(.83)
4	(100)	5/8	2 3/4	(69.85)	3 15/16	(100.01)	1 11/16	(42.86)	7 1/2	(190.50)	5	(127.00)	475	(2.11)	2.81	(1.27)
5	(125)	5/8	3 1/2	(88.90)	4 5/16	(109.54)	1 9/16	(39.69)	8 5/8	(219.08)	6	(152.40)	685	(3.05)	4.42	(2.00)
6	(150)	3/4	4	(101.60)	5 3/8	(136.53)	2 1/16	(52.39)	10 1/4	(260.35)	7 1/8	(180.98)	780	(3.47)	5.98	(2.71)
8	(200)	3/4	5 1/8	(130.18)	6 1/2	(165.10)	2 3/16	(55.56)	12 3/4	(323.85)	9 1/4	(234.95)	780	(3.47)	11.42	(5.18)
10	(250)	7/8	6 3/8	(161.93)	7 3/8	(187.33)	2	(50.80)	15	(381.00)	11 1/4	(285.75)	965	(4.29)	17.36	(7.87)
12	(300)	7/8	7 1/2	(190.50)	8 3/4	(222.25)	2 3/8	(60.33)	17 3/8	(441.33)	13 1/4	(336.55)	1200	(5.34)	24.62	(11.17)
14	(350)	1	8 3/8	(212.73)	9	(228.60)	2	(50.80)	18 7/8	(479.43)	14 3/4	(374.65)	1200	(5.34)	36.00	(16.33)
16	(400)	1	9 1/2	(241.30)	9 3/4	(247.65)	1 3/4	(44.45)	20 3/4	(527.05)	16 7/8	(428.63)	1200	(5.34)	44.00	(19.96)
18	(450)	1	10 1/2	(266.70)	11 3/4	(298.45)	2 3/4	(69.85)	23 3/4	(603.25)	18 5/8	(473.08)	1400	(6.23)	54.00	(24.49)
20	(500)	1 1/4	11 5/8	(295.28)	12 1/2	(317.50)	2 1/2	(63.50)	26	(660.40)	20 7/8	(530.23)	1600	(7.12)	74.00	(33.57)
24	(600)	1 1/2	13 13/16	(350.84)	16 1/2	(419.10)	4 1/2	(114.30)	31	(787.40)	25	(635.00)	1600	(7.12)	126.00	(57.15)

"B" (Center of axle to center of pipe)

Unless otherwise specified, all dimensions on drawings and in charts are in inches and dimensions shown in parentheses are in millimeters.

THREADED ACCESSORIES
CPVC STRAPS
BAND HANGERS
BEAM CLAMPS
CLEVIS HANGERS
PIPE ROLLER SUPPORTS
SPLIT RING HANGERS
PIPE CLAMPS
CENTER LOAD BEAM CLAMPS
PIPE SHIELDS, INSULATION, & SADDLES
PIPE GUIDES & SLIDES
WALL BRACKETS
PIPE SUPPORTS
STRUCTURAL ATTACHMENTS
SEISMIC BRACING